

Eucalyptus salmonophloia

Salmon Gum

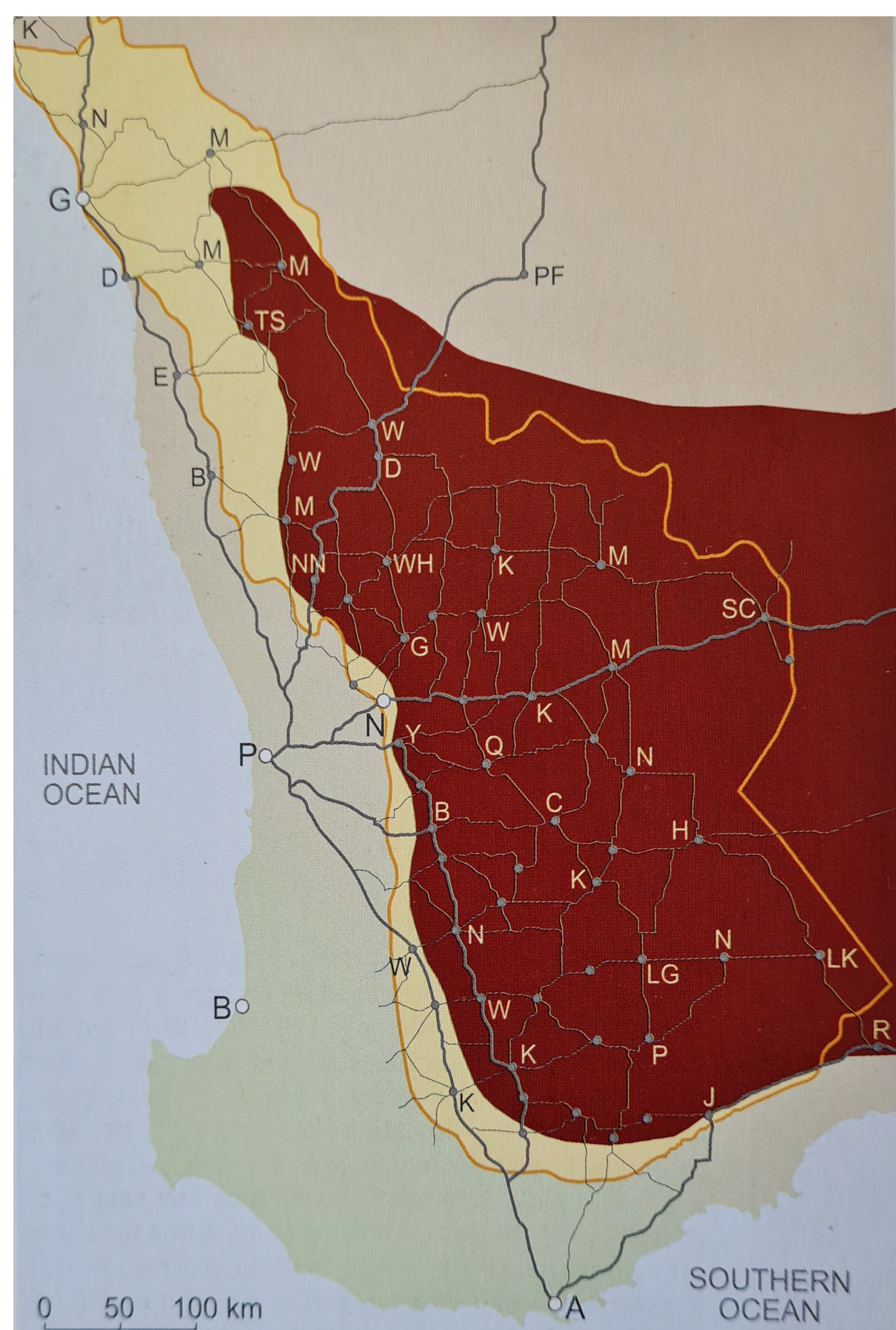
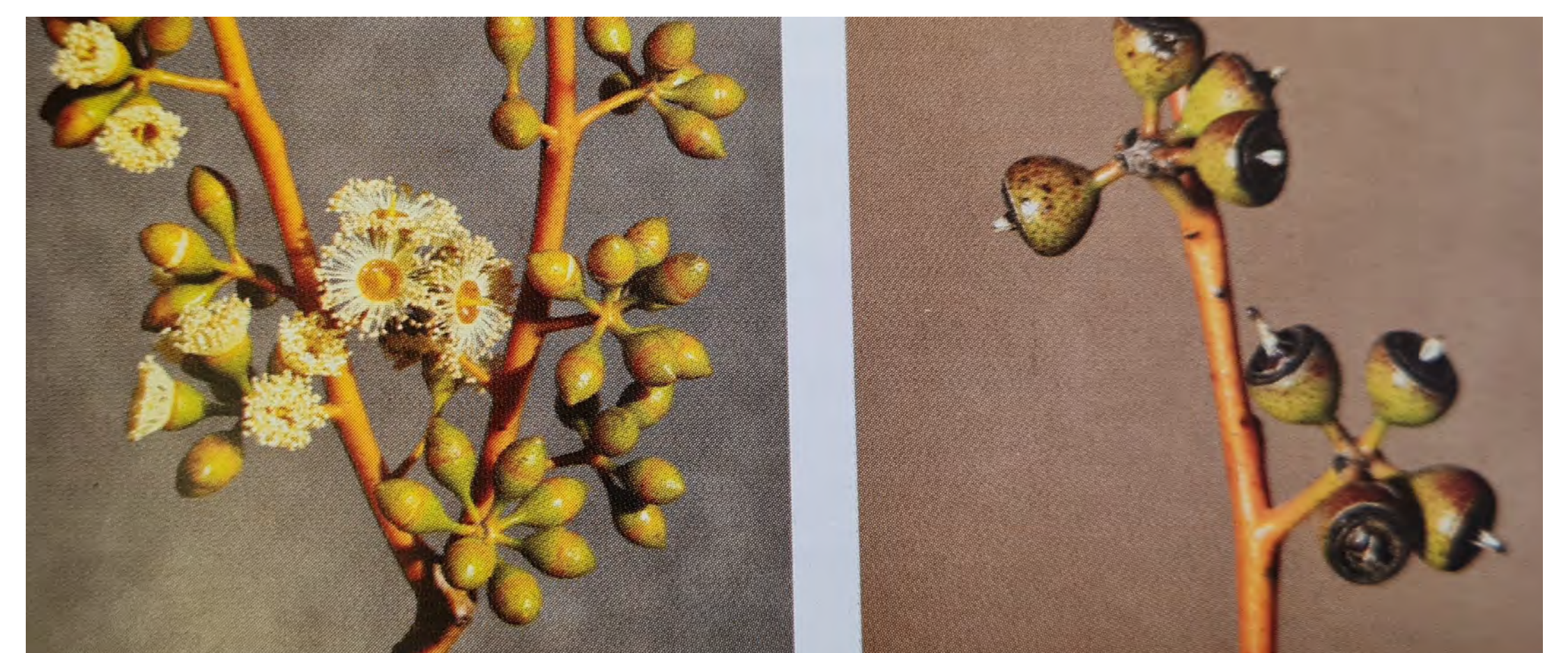
woorak, wurak or weerluk



Salmon Gums south of Coomberdale

Salmon Gum is probably the most iconic tree of the WA Wheatbelt environment. Often seen towering along roadsides or alone in paddocks, this majestic tree's bark turns 'salmon' in colour during the summer months

Description: Grows to a height of 4–30 m (13–98 ft) but does not form a lignotuber. It has smooth pale grey smooth bark that is shed in flakes to reveal salmon-coloured new bark in summer. Adult leaves are very green and glossy. Flowering occurs from August to December and the flowers are creamy white. The fruit is a woody, hemispherical capsule 3–5 mm (0.12–0.20 in) long and 4–5 mm (0.16–0.20 in) wide.

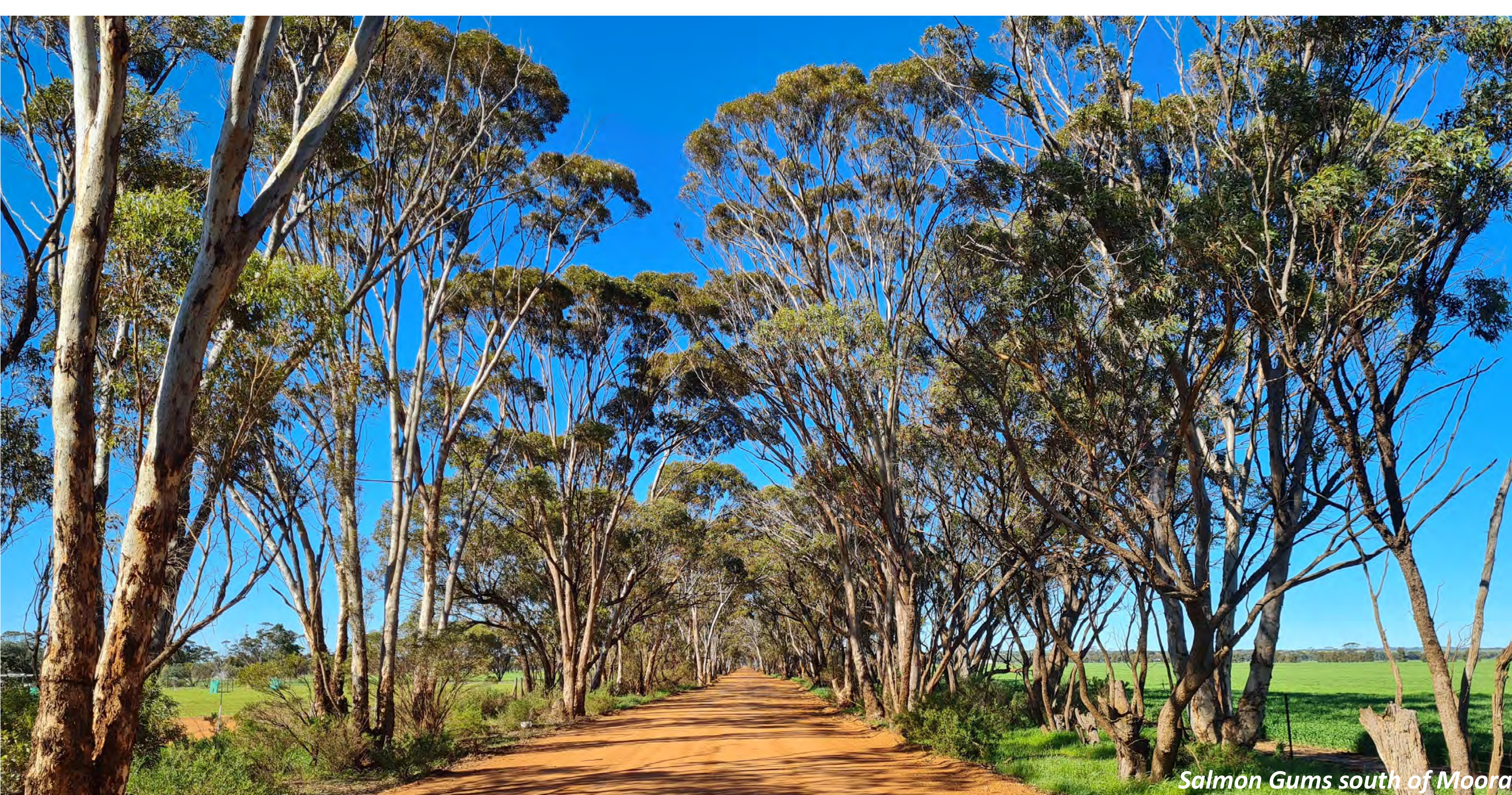


Distribution: Widespread through the wheatbelt agricultural area from Mullewa to Gnowangerup in mainly remnant populations (Salmon Gums indicated good agricultural soil so these areas were preferentially cleared). Eastern occurrences are far less disturbed and extend as far east as Cundeelee to the north around Mt Gibson area and south to around Salmon Gums.

Found growing in broad valleys, plain and low hills in areas that receive as little as 250 millimetres (10 in) of rain per year it grows in alkaline loamy soils red clay loam or clay and red sandy soils often with gravel. Long life span with known trees 150 years old or more.

Environmental, social & economic benefits:

- Breeding, roosting and forage tree for Carnaby's Black Cockatoo and other wheatbelt birds.
- Ecosystem services for farming - used by owls and raptors who eat feral pests such as mice and rabbits. Shade for sheep and cattle in paddocks. Useful as part of a windbreak to help mitigate damaging winds. Helps to cool soil and encourage precipitation.
- An attractive tree which is admired by locals and tourists state and Australia wide. Remnants often seen along roadsides and railway lines for many to enjoy.



Salmon Gums south of Moora



Summer Salmon bark



Salmon Gums south in Moora