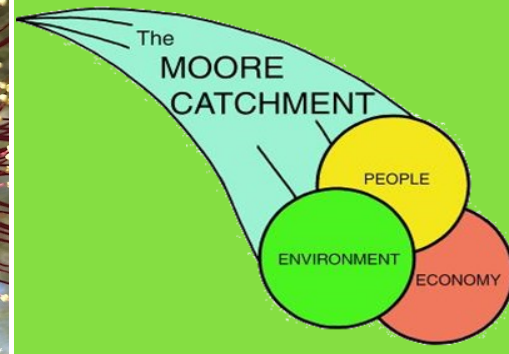




Eucalyptus rodanthera. A rare plant in the Moore catchment

Moore to the point Spring 2018



Conserving the Moore River catchment since 1995

In This Issue

WA natural assets highlighted at Last Stand

People from all over Australia flooded to Moora between the 5th and 9th September to visit The Last Stand, a free environmental awareness event aiming to highlight the wonders and woes of Midwest wheatbelt native vegetation. Rachel Walmsley, Moore Catchment Council's Community Landcare Coordinator who helped organise the event said "The Last Stand was the brainchild of a frustrated group of ladies (and lad) living between Calingiri and Carnamah who wanted to do something to show off all the amazing natural assets we have here in the Midwest but also highlight the threats which are continuing to decimate them including introduced weeds, and roadside clearing. We decided to take a punt and do something different, and so this 5 day event was conceived and organised on a shoestring budget as it needed to happen as soon as possible."



The event included a symposium on the 5th which attracted 70 people from around the State who came to listen to a plethora of excellent environmental speakers including former Premier and current Conservation Council Chair Carmen Lawrence. Rachel said "The message coming from the talks was clear and unified - we need to conserve our natural environment now or lose it forever." For the remaining 4 days, The Last Stand played host to over 300 members of the public who visited the event to look at the extensive information displays and art, get up close to native bugs,

admire and create bush art, claim free native trees and shrubs, add thoughts to the 'Tree of Life' and learn about bush medicine. Rachel said "The event was a huge success and helped open eyes to the real lack of remnant vegetation left and continuing decline in native biodiversity."

Feedback was overwhelming positive and plans are being made to possibly hold the event again next year as the event served as a good drawcard to attract visitors to Moora. Rachel concluded "The event couldn't have happened without the input from the volunteer committee - Fiona Falconer, Alison Doley, Sarah Mason, Paulina & Peter Wittwer, Pam Toster, Marie Carter and Lyn Phillips; the cash contributions from Lotterywest and the WA Natural Resource Management Program; and the generous in-kind support from all the speakers and display/event donators, and finally the Shire of Moora for supplying the venue."



- | | |
|---|---|
| 2 | The Last Stand - what was it all about?? |
| 4 | Moore Carnaby cockatoo habitat projects completed |
| 5 | Find out how to plan a native revegetation project |
| 5 | Over to Brisbane for the National Landcare conference |
| 6 | Guilderton rehabilitation projects continue |
| 7 | What has been happening to conserve natural assets? |

Moore Catchment Council

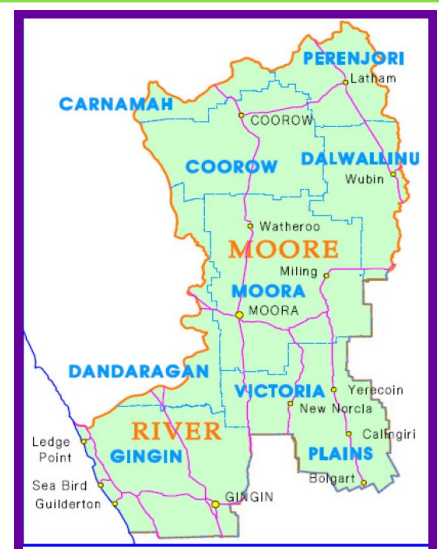
20 Roberts Street,

PO Box 337, Moora WA 6510

Tel: 9653 1355

www.moorecatchment.org.au

email: moorecc@bigpond.com



The Last Stand - what was it all about ?



Opening day saw The Last Stand symposium. 11 top class speakers from around the State talking about conserving our natural assets and issues surrounding. Speakers touched on the inadequate laws, lack of knowledge, lack of appreciation of the importance of native vegetation for biodiversity and our mental wellbeing.

Everyone agreed that something has to be done soon before its too late !



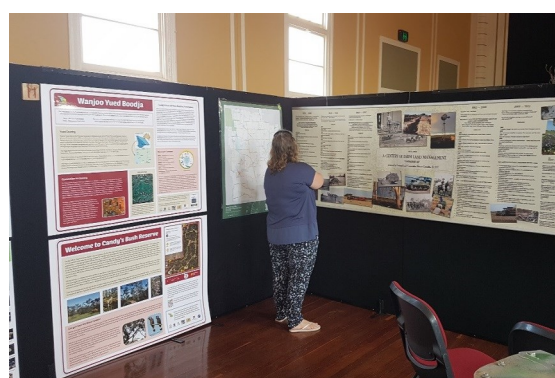
Carmen Lawrence talked about mental wellbeing



Rob Boase talked about our wonderful wildflowers



Tony Hughes-d'aeth talked about clearing history



A mass of information. The displays showed how much remnant vegetation per Shire there really is remaining, why we should be conserving what we have left, endangered species information, roadside native vegetation conservation advice, wheatbelt bird species, wheatbelt tree species, EPBC listings for endangered species here, artwork, poetry and more.



See, learn, do at The Last Stand



The Tree of Life - participants were able to scribble their words of wisdom or anger on to real leaves to releaf the Acacia



Children could make some nature craft with Juanita



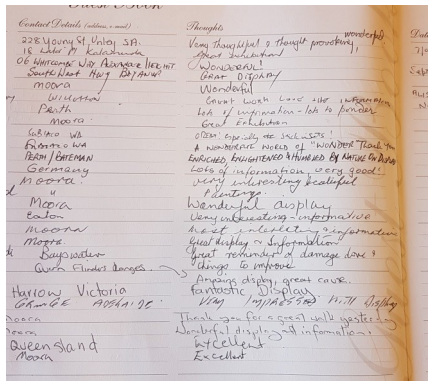
The Spineless Wonders team brought an interactive display of spiders, beetles, cockroaches, giant stick insects and more



The Chamber of Commerce held their get together. Tony White (Vice Chairman of MCC) explained what the event was all about.



1000 native seedlings were given away



Nearly 400 people from all over Australia (and the world) came through the doors. Feedback was sensational

Behind every good event is a hardworking committee. These gals (and guy) had an idea to raise awareness of the WA environment and just made it happen !

I-r Alison Doley, Pam Toster, Fiona Falconer, Lyn Phillips, Peter & Paulina Wittwer, Sarah Mason, Marie Carter & Rachel Walmsley



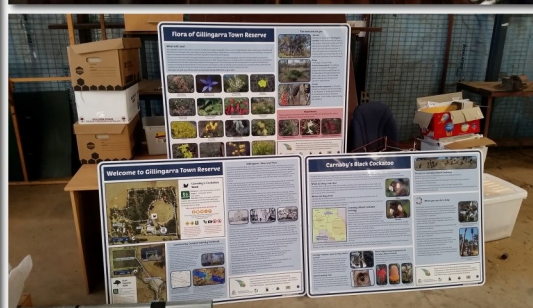
Carnaby's benefit from two recently concluded projects

MCC is pleased to announce the conclusion of two projects which have aimed to increase Carnaby Black Cockatoo breeding and forage habitat, and also help raise awareness of the bird species. One project was funded through the National Land-care Program's 20 Million Trees project and involved planting 46,000 native trees and shrubs on 9 properties in the Moore catchment. There have been great results all round including this one:



Wow !! What a difference in just 3 years !!! This site on the Yadgena creek east of Moora has been completely transformed thanks to this project.

The second project was funded through the State NRM Program and focused on the Gillingarra Important Bird Area (IBA) and New Norcia. Outcomes included: **12,000 seedlings planted**, nearly **100 people (students, locals, farmers) directly involved** with the planting and information event. **4 new interpretive signs** at Gillingarra and New Norcia.



New Moore resource to help landowners plant natives

Thinking of doing a native revegetation project in the Moore River catchment region ? Did you know it takes 12 months to plan a successful revegetation project? Don't know where to start?



This new booklet could be for you ! Simple hints and tips to get your native revegetation project off to a flying start. Inside the booklet are helpful planning tips, tools and idenative species to suit your soil type and location.



as for

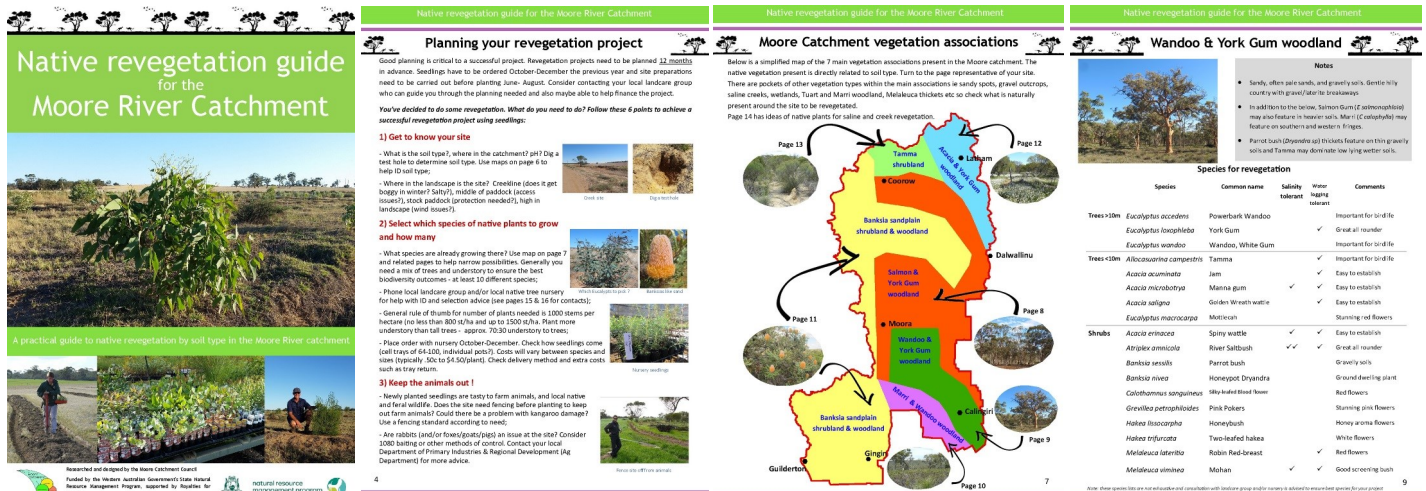
What are you waiting for.....download today (or come a get a printed copy from the office) and get planning, get planting !

Thanks to Western Australian Government's State Natural Resource Management Program, ported by Royalties for Regions for funding



sup-

http://www.moorecatchment.org.au/wp-content/uploads/2018/01/Moore-revegetationguide.pdf?fbclid=IwAR0hdOTRvCpPHoDo3YvbQDkCAvUsp0Dr_RYoe1CI48u3_rtCh8fKEfIFCE



MCC attend the National Landcare conference

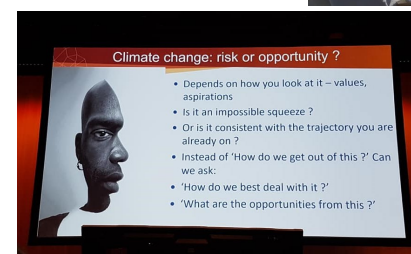
Helen, Rachel and committee member Sarah Mason made the trek over to Brisbane in October for the National Landcare Conference - a three day conference bringing together land and coast carers from all over Australia to learn and share ideas. MCC were invited also to represent WA as the winners of the 2017 State Community Landcare Group award to compete in the National awards announced during the event - we didn't win the Nationals but happy with the WA title.

MCC took along two posters - one on native clearing by stealth and one showing WA's amazing wildflowers. So many people gravitated towards the wildflower one asking what they were and were they real?! WA really does have an amazing natural secret with its wildflowers !

Highlights for the conference were the excellent field trips - seeing is believing!, hearing about different projects presented during the concurrent sessions including highlighting light pollution as a detrimental issue to native animals and health, using Aboriginal burning techniques alongside modern ones and showing it to be more efficient and effective, listening to Keith Bradbury share the Gondwana project successes from 'just getting on with it', and highlighting how awesome women are in landcare but how it is still a male dominated industry especially at the top. The general message from the event was that Landcare is valued and returns at least 3-fold in investment but funding is near non-existent now but this needs to change for Australia to thrive.



Right: visited a small community where they have a communal composting hub. Started by a few keen parents wanting to connect with the land



Mark Howden delivered the latest IPCC report and also challenged how Australia will look at the task in hand. Different ways of viewing - which face do you see??

Coastal rehabilitation at Guilderton

We came. We planted. It rained !

Enthusiastic volunteers came together on the morning of Sunday 10th June to help get seedlings planted on the Guilderton north dunes .This is the 4th (and hopefully) final year that we'll reveg the old vehicle tracks in the 22ha conservation area fenced off in 2014. The morning started sunny (it did !) and everyone got stuck into it. We had about 8 different species grown from seed harvested from the dunes by volunteers back in 2016. It started to cloud over and the rain started about 11am so waterproofs on. A huge down-pour at half 11am was the beginning of the end as water filled boots and wet bodies made retiring to the Country Club for lunch very appealing. Over all, about 2/3 of the plants got planted by the 25 strong crew which is a magnificent effort - well done to all the vollies who gave up their time including members of the 4WD Club of WA, Guilderton and Woodridge residents, Conservation Council and Sercul vollies. Thanks to Hamish from NACC for coming down with equipment and water bowser - he was last in from the rain ! This project was funded through NACC's Coastal program using funds from the National Landcare Program. Thanks to Moora Citrus for sponsoring the oranges - very tasty.



Pyp Grass management update. If you've been down to Guilderton lately, you might notice all the dead vegetation on the dunes and around the caravan park. This is the sprayed weedy Pyp grass which has happened over the last year including the last round of spraying in May this year. The extent of this persistent weed is easily seen now with its ability to smother and choke out the native vegetation.



Caravan Park slopes covered in Pyp grass

Further spraying is needed to kill off the weed completely but unfortunately funding has dried up due to the demise of NACC who previously funded the spraying through their federal funding. MCC have applied for additional funding through the State NRM Program but will not know the outcome until December.



Mortimer road - thick with Pyp grass

Moora show mass native tree giveaway



MCC had a productive day at the Moora show this year. Around a hundred people came to the stand to get some native trees and shrubs to plant. There was a diverse range to choose from including several Melaleucas, Banksias, Grevilleas and Eucalypts all priority forage and breeding species for Carnaby's Black Cockatoo. These were made available by funding from the State NRM Program. Rachel and Helen were also able to impart advice on which species to plant where and how to care for the seedlings. A good part of the day is listening to updates from the people who visit the MCC display every year and plant a few more shrubs and trees.

Projects for conserving Moore's natural assets

MCC has six projects focused on protecting or restoring natural assets, and helping to conserve Carnaby's Black Cockatoos through habitat planting, erection of artificial nesting logs and community awareness raising funded through the National Landcare Program



The new MCC 20 Million Trees project got to work this winter with 12,000 trees and shrubs being planted around a degraded lake fringe west of Moora. This is a worthy project which will transform this lake and help create Carnaby forage habitat on the edge of Moora.

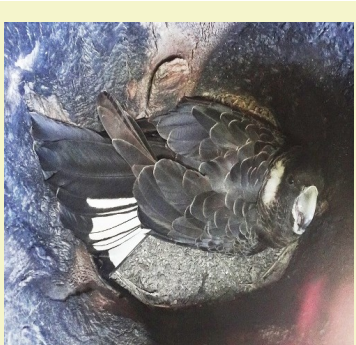
MCC engaged Ian Pulbrook to carry out the works - got slightly bogged one day though - perils of the job !!



The Adams family east of Moora have been steadily revegetating sections of the Yadgena creek over many years. This year they were able to revegetate a 6ha section thanks to the State NRM Program. Watch this space for progress.....



Great news over at Mt Yule! The project to extend the population of the endangered *Eucalyptus recta* (Mt Yule Silver Mallet) is going very well. There was a near 100% success rate of the seedlings surviving from last year and now they are flourishing. There was an additional planting at another site at Mt Yule so even further success hoped. Thanks to the State NRM Program for this funding to carry out this work.



MCC has been continuing to help the Kerkhof Carnaby Group in Moora by providing funds to construct and locate artificial Carnaby log nests in the catchment. This year 10 have been erected at Gillingarra, Koojan and Dalaroo in reserves known to be used by Carnabys. The hope is for the log nests to be as successful as the ones in Moora. MCC will update on progress.

The Carnaby's are back in Moora to breed. A quick look with the pole camera in a few logs revealed hens sitting on eggs. Good news! Wally says there are about 150 pairs in and around town. Great news !!

Come and join us at the MCC AGM 9th November 2018

Moore Catchment Council Inc. AGM

Ballet Room
Moora Recreation Centre
Moora WA 6510

RSVP for catering Tuesday 6th Nov 2018 to Helen Watkins moorecc@bigpond.com or phone 08 9653 1355 Text: 0428 514 292

JOIN US Want to do something to help the environment in the Moore Catchment??? Then join our committee ! We need people with ideas to encourage landcare and coastcare in our region. Its not a hard job to be on our committee - a few meetings per year and your input into projects. Come on.....

9:00am - How to use native species to fix up degraded land. Come and see two amazing projects in progress and talk to the farmers doing them. *Meet at Moora recreation centre front door at 9am to car pool, or meet at Orton road turning on Midlands road 6km SE from Moora at 9:30am*



11:00am - Registration & a Cuppa at Ballet room

11:30 AGM - followed by a presentation from Dr Jill Wilson about the WA Landskills project achievements, and a presentation from Rachel on MCC's activities over the past year.

12:30 - Lunch (lunch provided)

Maya Malleefowl mound action

Malleefowl (*Leipoa ocellata*) were once common and widespread throughout southern Australia but in the last century their numbers have declined significantly. They have completely disappeared from a number of areas and the bird is now recognised as a threatened species in Western Australia. This active mound near Maya is one of the few remaining in the area. Peter Waterhouse took this photo using a remote camera. The Malleefowl pair check on their eggs everyday by digging them out - that's dedication!



A bit Moore

A bit Moore

MCC funders



natural resource
management program



Perenjori
Embrace Opportunity



MOORA - MILING PASTURE
IMPROVEMENT GROUP



Australian Government

National
Landcare
Programme



meat & livestock australia



WHEAT SHIRE

SHIRE
GINGIN



GUNDUWA
Regional Conservation Association

Moore Catchment Council



Rachel Walmsley

Community Landcare Coordinator
 9653 1355
 0409 296 264
mcc.nrm@bigpond.com



Helen Watkins

Executive Officer
 9653 1355
 0428 514 292
moorecc@bigpond.com

MCC Awards

- * Finalists & Semi Finalists in WA Regional Achievement and Community Awards 2014, 2015, 2016 & 2017
- * **Winner** in WA Landcare Awards 2017 (Fairfax Community Group), Finalist 2015

Support Moore local landcare..... Donate
<http://www.moorecatchment.org.au/get-involved/donations-and-sponsorship/>

Find us on
Facebook

twitter

Stay up to date !!!! Follow MCC.....

Keep up to date on social media. We're on Facebook and Twitter at Moore Catchment Council . Please LIKE us to have regular info on your feed :)