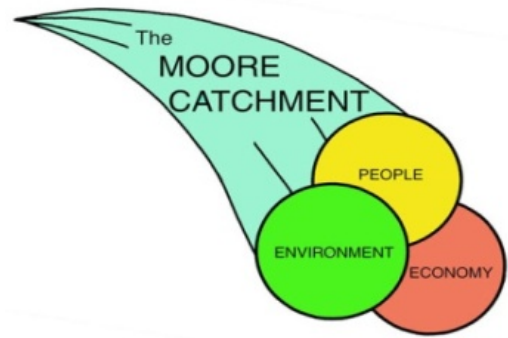


Moore Catchment Council



Annual Report 2016/2017

"To maintain and improve the health of the Moore River environment by communicating natural resource management and encouraging maximum sustainable use of resources."



natural resource
management program



ROYALTIES
FOR REGIONS



National
Landcare
Programme



Front Cover Photo: Mt Yule Silver Mallet (*Eucalyptus recta*)

TABLE OF CONTENTS

1. Forward	4
2. Staff & Committee	5
3. Chairpersons report.....	7
4. Executive Officer report	8
5. Finance Report.....	9
6.Audit Report	16
7 Projects Review	17
7.1 NACC Project CCGP17-05– Rehabilitation of the North Guilderton dunes 2016-17.....	17
7.2 NACC Project 1715-06C-03– Guilderton Pyp Grass Management works program.....	18
7.3 20 Million Trees program Round 2 – 20MTR2-176: Increasing breeding habitat for Carnaby's Black Cockatoo in the Moore Catchment	19
7.4 NLP Small Grants Round 1 – 0647: Moore Knowledge and Opportunities: Review and Share Learnings from Ten Years of Sustainable Agriculture Projects.....	20
7.5 State NRM Project 14162 – Protecting and enhancing the Moore River biodiversity assets	21
7.6 State NRM Project A15053 – Planting food for endangered Carnaby's Black-Cockatoo in the Gillingarra IBA	22
7.7 State NRM Project A15006 – Enhancing Mogumber Town Reserve as a local natural asset	23
7.8 State NRM Project A15066 – Conserving and enhancing the Moore's natural biodiversity assets	24
7.9 State NRM Project A16055 – Conserving and enhancing the Moore's natural biodiversity assets Stage 2	25
7.10 State NRM Project A16130 – Conservation of Carnaby's Black Cockatoo in Moora and Boonanarring.....	26
7.11 State NRM Project CCGL15456 – Improving natural resource management capability in the Moore River Catchment	27
7.12 Gunduwa Regional Conservation Association - Reconnecting landscapes in the wheatbelt through revegetation corridors	29
7.13 Meat & Livestock Australia Research – L.PDS.1705: MLA Producer Demonstration Site: Advantages of Pasture Manipulation	30
8 Public events and accolades	31
9 Moore Catchment Environmental Fund	33
11 Moore Catchment Support	34

1. Forward

The Moore Catchment Council (MCC) is a not-for-profit organisation focussing on the protection and enhancement of the Moore River and its catchment.

MCC has a 22 year track record of attracting natural resource management grants and successfully completing projects that improve the Moore River catchment.

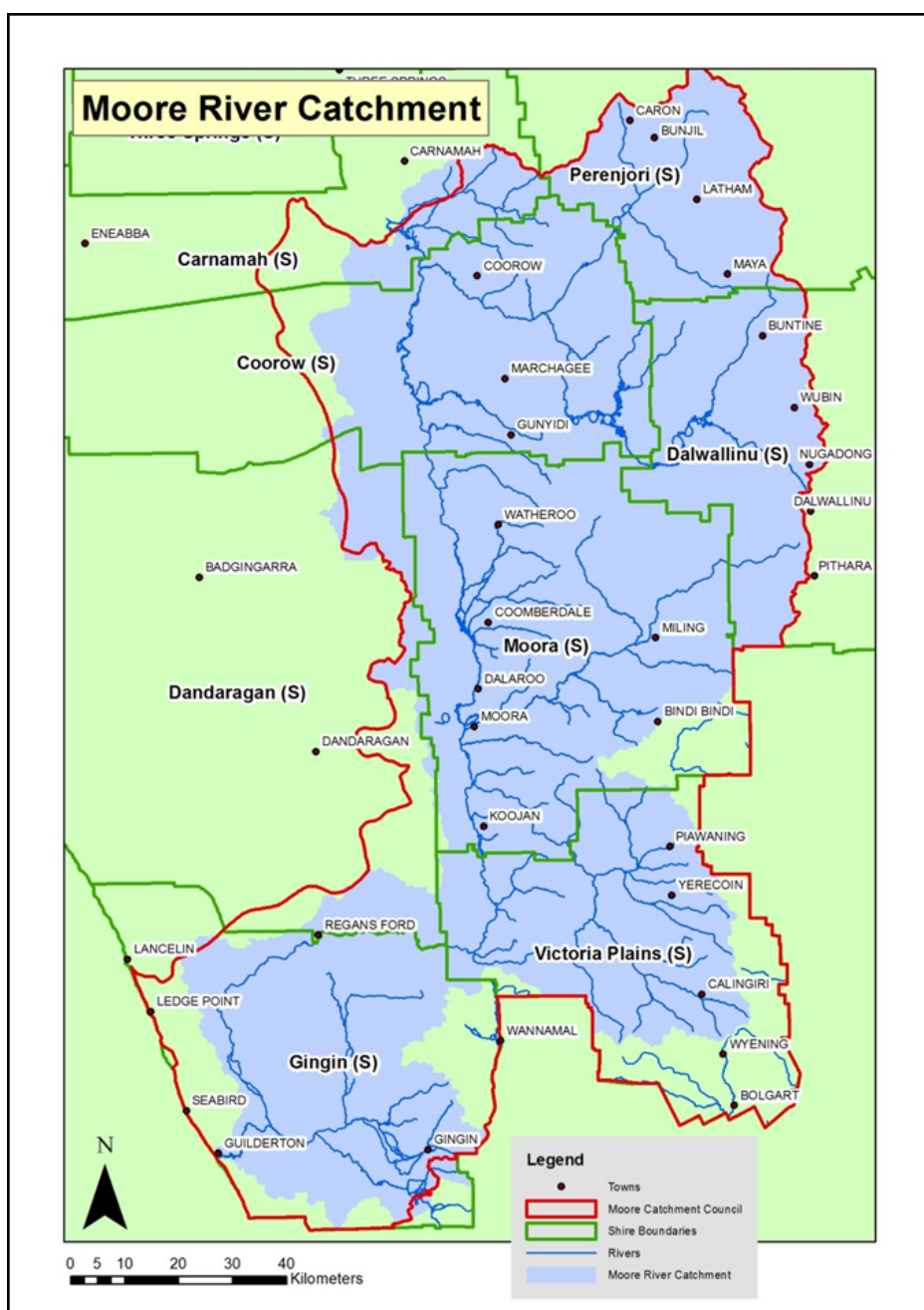
The immense diversity of the catchment is reflected in Moore River's Industries. The Moore River rises in the old geological zone of the Yilgarn Craton, crossing the Swan Coastal plain and discharges to the ocean at Guilderton.

Industries of the Moore River Catchment include:

Broad acre agriculture
Horticulture and viticulture
Fishing
Eco and Heritage Tourism
Mining
Holiday destination
Sea & Tree change lifestyles

Our Staff can:

- Source technical information by liaising between experts in fields such as hydrology and heritage
- Facilitate local and regional linkages with Federal, State and Regional natural resource management programs.
- Assisting in the development and co-ordination of projects and sourcing of funding.
- Facilitate workshops and identify Landcare/NRM training needs.



2. Staff and Committee

Moora Office:

20 Roberts Street

P.O Box 337

Moora WA 6507

Phone 08 9653 1355

Website: moorecatchment.org.au

Facebook: www.facebook.com/moore.catchmentcouncil

Staff Summary

Over this year we have employed:

Executive Officer



Helen Watkins joined the team in September 2008; Helen lives in Dandaragan with husband Paul where they run an Agricultural Contracting Business.

Helen has the role of Executive Officer of the Moore Catchment Council and is employed for 15 hours per week. Her key responsibilities are administering the finances and doing the day to day administration of the group, project Management of the many projects undertaken by MCC, keeping projects on track, updating the website, keeping data bases up to date and informing members what is happening with the MCC.

Community Landcare Co-ordinator (CLC):



Rachel Walmsley worked as a NRMO for MCC since early 2008, until her role changed to a CLC in 2017. Rachel emigrated to Western Australia in 2007 with her partner Andrew and has qualifications in Earth Science (UK) and Sustainability (WA), and six years in waste management. During her time with MCC she has worked on approximately 50 projects including salt land reclamation using saltbush, remnant bushland conservation on private and public land, Carnaby's Black Cockatoo conservation, sustainable agriculture practices, Aboriginal engagement activities, Eco-tourism resources and coastal rehabilitation programs. Highlights include MCC's Carnaby cockatoo conservation campaign with over 100,000 native plants established so far, and widespread publicity and community awareness of this endangered species. Rachel also enjoys wildflower photography and uses those images to promote the Moore's vast array of natural assets for conservation and eco-tourism.

Project Officer



Emma Pearse joined the MCC team in April 2017 to fulfil a short term contract as the Moore Review Project Officer. Emma grew up on the family farm in Miling and completed a bachelor's degree with honours in Natural Resource Management at UWA.

After graduating university Emma spent two years working in Perth as a contaminated lands Environmental Consultant.

During her time at MCC she was involved facilitating the Moore Review Project which included visiting and interviewing over 75 farmers involved in sustainable agriculture projects run by MCC over the past ten years. These projects involved saltbush, oil mallees, brushwood, perennial pastures and strategic revegetation to combat a number of issues in the area including wind erosion, waterlogging, and saline land. She has compiled a report with her findings of this project. Emma has a passion for sustainable agriculture and has thoroughly enjoyed her work with MCC and gained many skills.

MCC Committee:

Chairperson:	Reg Beale		
Vice Chairperson:	Tony White		
Secretary:	Sarah Mason		
Treasurer:	Lawrie Short		
Committee:	Janice Page	Duncan Peter	John Longman
	Kaye McGlew	Dahlia Richardson	

Executive Committee

Chairperson:	Reg Beale
Vice-Chairperson:	Tony White
Secretary:	Sarah Mason
Treasurer:	Lawrie Short



2016 AGM held at Guilderton

3. Chairperson's Report



With another year completed the funding of Moore Catchment Council did not lessen however we have been successful in receiving a wide variety of grants.

Your Committee have addressed and monitored regularly the various funding options available to ensure Moore Catchment Council continues in its endeavours to better service community and business environmental issues. As one would appreciate these funding issues challenge us each day as we approach the future of climate change and the delicate government agendas, state and federal.

As indicated previously there is continued co-ordinated interaction between the various environmental groups to endeavour to get better mileage out of the limited grants available and once again although the political arena appears to acknowledge various environmental issues there never seems to be enough funds when it comes to funding and grants.

Thanks to our competent staff, we received a Landcare award which recognised the value Moore Catchment Council achieves in its environmental goals. We have attained our many milestones for 2016/17 and look forward to the new milestones of 2017/2018 as we are now in receipt of grant funding which will enable us to further pursue a number of important environmental issues.

During the year we involved Emma Pearse to do a special assessment of our sustainable Agriculture projects via site visits which further confirmed the achievements of the Moore Catchment Council's various projects and the community benefits being derived.

Our sole FO Rachel has been getting on with the tasks at hand so that MCC meets its contract project deadlines, and at the same time conducting community information, site visit sessions, and the many day to day challenges and projects have kept Rachel well occupied.

In closing, I record my and the committee's appreciation to our EO Helen Watkins for a job well done in her application for grant funding and equity of all grants received and attending to day to day tasks liaising between our many counterparts in the environmental area including NACC. Helen is also to be commended on her attendance at a number of Landcare events and her recognition by appointment to the Members Council for the National Landcare network

My appreciation is once again recorded to Helen, Rachel and members of the Committee for their support and input during the past 12 months.

Regards

Reg Beale



4. Executive Officer Report



The Moore Catchment Council (MCC) had an exciting year this year with the completion of a few projects and the starting of some new projects that are listed in this report.

Over the year we have been a semi- finalist in the LandCorp Sustainability Award - Western Australian Regional Achievement and Community Awards, Rachel was honoured with the NRM Coordinator leadership award in the Regional NRM awards hosted by NACC , planted 65,700 seedlings for Carnaby's, fenced 6.5km of remanent revegetation, planted 25,000 seedlings for revegetation and regeneration of our assets, and planted 1,800 seedlings at Guilderton for dune rehabilitation, along with the general running and juggling of projects. All this was done by the small staff (Rachel & I) and some keen volunteers. In April Moore Catchment Council moved its office from Cunninghams Ag services to the Ag Department where we have settled in well, once again a job well done by staff and committee to move everything and set up our new space. What an incredible effort, a big pat on the back to everyone involved throughout the year.

In September 2016 I had the pleasure of attending the National Landcare Conference in Melbourne, it was great to see that landcare is still going well around Australia and there is a passionate group of young people continually getting involved. WA was so very proud when they took out 6 of the awards.

Prior to the conference the National Landcare Network (NLN) held their AGM. At this AGM it was decided to have a Members Council to advise the NLN Board, this Council would have 3 representatives from each state. I was fortunate enough to be nominated as one of these representatives for WA along with Keith Bradby and Louise Duxbury. Louise was then voted by the Council to be Chairperson of the Members council.

This year the administration, running and staffing of Moore Catchment Council (MCC) was helped by the generous Capability grants round sponsored by the State NRM Office and Royalties for Regions in addition to administration and Project management funds coming out of each project, Shires in the Moore Catchment (MC) Annual contributions, equipment hire, a new fee for service contract work.

Thank you to Rachel for all your exceptional hard work throughout the year, all that grant writing, and juggling of the numerous different small/medium projects that MCC has undertaken this year, and the pulling out of your hair working out how to do all the projects with such small project management money. It is credit to your passion and drive that these things happen.

We were fortunate this year to attract Emma Pearse to work with us for 3 months on the NLP Sustainable Ag Small grants Review project, thank you Emma for all the time and effort that went into this mammoth task.

MCC continues to look for sponsorship and grants wherever possible. Donations made to Moore Catchment Council Inc. are tax deductible - DRG - "We are the Service Provider"

I am very proud of the incredible work that Moore Catchment Council has undertaken over the last couple of years on a shoe string budget.

Thanking all the Committee and staff for all their efforts and support during the past year.

Helen Watkins – Executive Officer

5. Financial Report

MOORE CATCHMENT COUNCIL INC.

FINANCIAL STATEMENTS FOR THE YEAR ENDED 30 JUNE 2017

NORTH MIDLANDS ACCOUNTING SERVICE

PO Box 110
21 Macpherson Street
CARNAMAH WA 6517
PH: 08 99511044
FAX: 0899511227
Email: nmas@westnet.com.au

MOORE CATCHMENT COUNCIL INC.

FINANCIAL STATEMENTS FOR THE YEAR ENDED 30 JUNE 2017

INDEX

Accountants Compilation Report

Detailed Balance Sheet

Detailed Profit and Loss Statement

MOORE CATCHMENT COUNCIL INC.
Compilation Report to MOORE CATCHMENT COUNCIL INC.

We have compiled the accompanying special purpose financial statements of MOORE CATCHMENT COUNCIL INC., which comprise the Statement of Profit or Loss and Other Comprehensive Income, Statement of Changes in Equity, Statement of Cash Flows and Statement of Financial Position as at 30 June 2017, a summary of significant accounting policies and other explanatory notes. The specific purpose for which the special purpose financial statements have been prepared is set out in Note 1 to the financial statements.

The Responsibility of the Director of MOORE CATCHMENT COUNCIL INC.

The director of MOORE CATCHMENT COUNCIL INC. is solely responsible for the information contained in the special purpose financial statements, the reliability, accuracy and completeness of the information and for the determination that the significant accounting policies adopted as set out in Note 1 to the financial statements are appropriate to meet the director's needs and for the purpose that the financial statements were prepared.

Our Responsibility

On the basis of information provided by the director of MOORE CATCHMENT COUNCIL INC., we have compiled the accompanying special purpose financial statements in accordance with the financial reporting framework described in Note 1 to the financial statements and APES 315 Compilation of Financial Information.

We have applied our expertise in accounting and financial reporting to compile these financial statements in accordance with the financial reporting framework described in Note 1 to the financial statements. We have complied with the relevant ethical requirements of APES 110 Code of Ethics for Professional Accountants.

Assurance Disclaimer

Since a compilation engagement is not an assurance engagement, we are not required to verify the reliability, accuracy or completeness of the information provided to us by management to compile these financial statements. Accordingly, we do not express an audit opinion or a review conclusion on these financial statements.

The special purpose financial statements were compiled exclusively for the benefit of the director of MOORE CATCHMENT COUNCIL INC. who is responsible for the reliability, accuracy and completeness of the information used to compile them. We do not accept responsibility for the contents of the special purpose financial statements.

NORTH MIDLANDS ACCOUNTING
SERVICE
PRACTISING ACCOUNTANTS
CARNAMAH WA

31 August, 2017

MOORE CATCHMENT COUNCIL INC.
Detailed Balance Sheet as at 30 June 2017

	Note	2017 \$	2016 \$
Current Assets			
Cash Assets			
Cash at bank - Westpac A/C 145544		15,106	60,867
Cash at bank - Westpac A/C 145579		65	15
Westpac Business Reserve A/C 149203		267,059	250,183
Westpac Enfirofund Reserve A/C 158011		4,883	4,861
Cash on hand		(53)	89
		287,061	316,016
Receivables			
Trade debtors		78,159	58,201
		78,159	58,201
Current Tax Assets			
GST clearing		3,225	(13,295)
		3,225	(13,295)
Total Current Assets		368,444	360,922
Total Assets		368,444	360,922
Current Liabilities			
Payables			
Unsecured:			
Trade creditors		54,565	20,184
		54,565	20,184
Current Tax Liabilities			
Amounts withheld from salary and wages		1,447	1,566
		1,447	1,566
Total Current Liabilities		56,012	21,750

MOORE CATCHMENT COUNCIL INC.

Detailed Balance Sheet as at 30 June 2017

	Note	2017 \$	2016 \$
Non-Current Liabilities			
Provisions			
Employees Long Service Provision		21,780	21,780
		<u>21,780</u>	<u>21,780</u>
Total Non-Current Liabilities		<u>21,780</u>	<u>21,780</u>
Total Liabilities		<u>77,792</u>	<u>43,530</u>
Net Assets		<u>290,653</u>	<u>317,392</u>
Equity			
Retained profits / (accumulated losses)		290,653	317,392
Total Equity		<u>290,653</u>	<u>317,392</u>

MOORE CATCHMENT COUNCIL INC.**Detailed Profit and Loss Statement****For the year ended 30 June 2017**

	2017 \$	2016 \$
Income		
Grants Received	234,758	271,886
Volunteer Grants 2015		5,000
Interest received	1,952	2,548
Membership Fees	5,000	5,000
Equipment Hire	2,157	
Donations	218	8,054
Project Income	22,426	3,860
Project Management Income	123,173	90,746
Sponsorship		4,750
Office Lease	6,091	6,205
Refunds	1,054	833
Total income	396,829	398,882
Expenses		
Advertising and promotion	85	160
Audit fees	2,175	2,810
Bank Fees And Charges	170	170
Catering - Meetings	3,806	2,711
Incidentals	49	854
Insurance	3,091	3,830
Internet Fees	801	854
License Fees		(62)
Moving Expenses	265	
M/V commercial - Lease	9,594	6,274
M/V commercial - Repairs	7,190	2,322
Office Supplies	606	206
Office Rental	8,469	6,854
Postage	448	293
Printing & stationery	2,081	207
Project Management Expenses	89,115	30,247
Consultants	52,040	25,575
Fencing Materials	35,637	10,400
Field Days	4,677	16,994
Printing		644

MOORE CATCHMENT COUNCIL INC.**Detailed Profit and Loss Statement****For the year ended 30 June 2017**

	2017	2016
	\$	\$
Machinery Hire	2,157	844
Seeds & Seedlings	46,822	81,827
Travel Expenses	1,500	6,990
Weeds and Pest Control		5,060
Planting Costs	5,120	6,700
Signage	1,232	17,970
Tree Guards		1,701
Booklet production		23,717
Monitoring expenses	1,100	3,976
Nesting Boxes	500	2,250
Film Production	2,900	
Working on Country Team	6,000	
Publications		35
Reimbursements - Fees	732	7,500
Staff training	515	243
Staff Uniforms	180	60
Superannuation	7,760	6,284
Telephone	2,748	2,633
Venue Hire	608	248
Wages	81,685	66,150
Wages - Finance Contract	27,900	23,263
Total expenses	409,760	368,795
Profit (Loss) from Ordinary Activities before income tax	(12,931)	30,087

6. Auditors Report

N

NORTH MIDLANDS ACCOUNTING SERVICE

*Practising Accountants &
Tax Agents*

MOORE CATCHMENT COUNCIL (INC)

M

INDEPENDENT AUDITOR'S REPORT

TO THE MEMBERS OF THE MOORE CATCHMENT COUNCIL (INC)

A

We have audited the Income and Expenditure Books of Account of the MOORE CATCHMENT COUNCIL (Inc.) for the period ended 30th June 2017. The Executives are responsible for the preparation and presentation of the financial report and the information contained therein. We have conducted an independent audit of the financial report in order to express an opinion on it to the members.

S

Our audit has been conducted in accordance with Australian Auditing Standards to provide reasonable assurances as to whether the accounts are free from material misstatement. Our procedures included examination on a test basis, of evidence supporting the amounts and other disclosures in the accounts, and the evaluation of accounting policies and significant accounting estimates. These procedures have been undertaken to form an opinion whether, in all material respects the accounts are presented fairly in accordance with Australian Accounting Concepts and Standards so as to present a view MOORE CATCHMENT COUNCIL (Inc.) which is consistent with our understanding of its financial position and the results of its operation.

The audit opinion expresses in this report has been formed on the above basis.

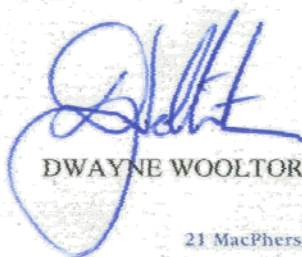
Qualification

Due to the nature of the activities of the MOORE CATCHMENT COUNCIL (Inc.) our testing of income has been restricted to the amounts recorded in the books of account, but reflects a true and correct record.

Audit Opinion

In our opinion subject to the above qualification the financial accounts present fairly the financial position of the MOORE CATCHMENT COUNCIL (Inc.) for the period ended 30th June 2017 and the results of its operations for the period then ended in accordance with applicable Statements of Accounting Concepts and applicable Accounting Standards.

NORTH MIDLANDS ACCOUNTING SERVICE



DWAYNE WOOLTORTON MIPA

21 MacPherson Street, Carnamah WA 6517 • PO Box 110, Carnamah WA 6517
Telephone: (08) 9951 1044 • Facsimile: (08) 9951 1227
• Email: dwaynew@westnet.com.au • nmas@westnet.com.au
BIGCRANGE PTY LTD • ACN 104 484 040 • ABN 58 906 867 264

7. Projects

7.1 NACC Project CCGP17-05– Rehabilitation of the North Guilderton dunes 2016-17

Project duration: 1 October 2016 to 30th June 2017

Budget: \$8,950.00

Project objectives This project will continue the remediation of the north dunes at Guilderton. The 22ha area of fragile dunes was fenced off from vehicles in 2014 and a walk trail formalised. Remediation works started on the degraded tracks in 2015 with a successful community planting and weed pull event in June partnering the Guilderton Community Association and the 4WD Club of WA funded through the State NRM Program. This collaboration ensured good volunteer attendance for the planting day. Weed control is needed along the walk trail to stop it becoming overgrown. Due to prior partnership with Dept of Parks and Wildlife on this site, DPAW are willing to carry out weed control works at a reduced cost and the Shire of Gingin will contribute to costs. This project will build on works done previous to achieve the goal of restoring this area to its natural state.

Outcomes include :

- Revegetate 2ha of degraded tracks using 2,000 local provenance native plants suitable for the project;
- Partner the Guilderton Community Association and 4WD Club of WA to organise and run a community planting and weeding event;
- Partner Dept of Parks & Wildlife and Shire of Gingin to carry out weed control works along walk trail.

Article: [Community collects seed for future revegetation](#)

The old adage ‘many (hot) hands make light work’ certainly came into effect on Friday 9th of December out on the north Guilderton dunes. 16 local people gathered on what was one of the hottest days so far this summer to learn about native plants and collect seed for future revegetation projects. Rachel Walmsley MCC’s Community Landcare Officer said “It was indeed hot but that didn’t deter local volunteers from Guilderton, Seabird, Redfield Park, Woodridge and Ledge Point giving up their morning to do some manual labour gathering seed.” Cat Williams, an experienced seed collector from APACE nursery, showed the group which plants were ready to be harvested and techniques to gather efficiently. Rachel said “Everyone was given a bucket and a plant to harvest. Some plants such as the *Melaleucas* required branches to be cut off and trimmed to access the year old seed pods. Others including *Threlkeldia diffusa* required a delicate touch and a dustpan to harvest the seed !” Ten different species of native dune plants were collected: *Spyridium globulosum*, *Melaleuca systema*, *Carpobrotus virescens*, *Hardenbergia comptoniana*, *Acanthocarpus preissii*, *Conostylis candicans*, *Melaleuca huegelii*, *Lepidosperma gladiatum*, *Calothamnus quadrifidus* and *Threlkeldia diffusa*. Rachel said “Cat was most impressed with the group’s huge seed haul and determination to beat the heat. These seeds will now be grown into plants at the APACE nursery for the community planting day in June 2017.” The weary seed collectors were then treated to a delicious lunch at the Guilderton Club to re-energise them after their hot morning. Many thanks to NACC and the Australian Government for funding the day.



Show us your seeds !



Hamish using the dust pan technique to gather seed

7.2 NACC Project 1715-06C-03– “Guilderton Pyp Grass Management works program”

Project duration: 1 Feb 2017 to 29th December 2017

Budget: \$22,609.00

Project objectives – Sections of Guilderton’s primary dune system are currently being degraded by infestations of Pyp Grass (*Ehrharta villosa*) and the biodiversity of surrounding vegetation is being undermined as a result of the spread of this aggressive invasive weed. This project will implement the first stage of spraying the weed to help control and hopefully eradicate it.

Outcomes include :

- Tender the on-ground works component to engage suitably qualified and experienced personnel to carry out works and set up of vegetation monitoring quadrats Spring 2017 (Stage 1);
- Manage on-ground activity Spring 2017;
- Liaise with land managers to confirm timing of on-ground work;
- Produce digital mapping of treated areas
- Setup Photomon points
- Final report

Areas to be sprayed



Figure 9: Heritage Park

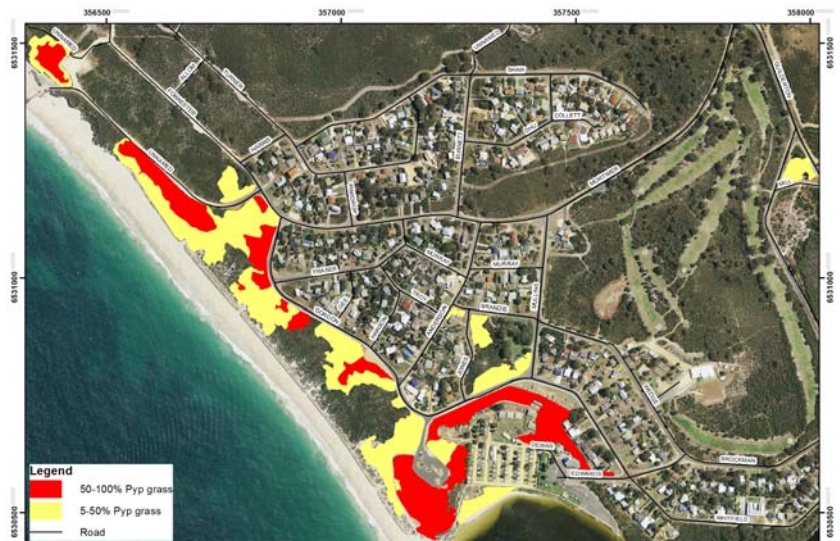


Figure 2: Pyp grass, Guilderton

Extent of Pyp grass



Figure 7: Lighthouse

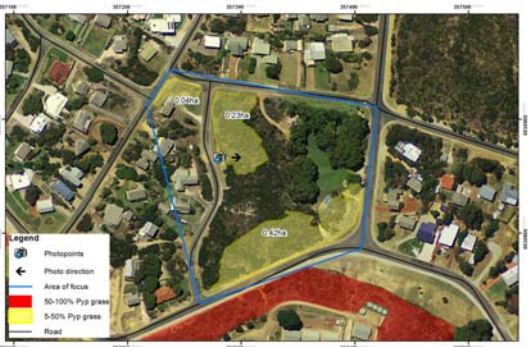


Figure 8: Gabbadah Park (including Anderson/Jones/Brandis Sts.)



Hamish and Pyp grass in Gabbadah Park

7.3 20 Million Trees program Round 2 – 20MTR2-176: “Increasing breeding habitat for Carnaby's Black Cockatoo in the Moore Catchment”

Project duration: April 2016 to 30th June 2018

Budget: \$69,575

Project objectives – Carnaby's Black Cockatoo (*Calyptorhynchus latirostris*) are endemic to WA but are rapidly in decline with total population estimates to be less than 60,000. The Moore River Catchment has 7 of the 23 designated Important Bird Areas (IBAs) that support Carnaby's. Unfortunately past and continuing clearing of Carnaby's breeding and forage habitat is threatening their future survival. This project aims to increase Carnaby's Black Cockatoo numbers through increasing and connecting breeding and priority forage habitat using mixed native trees and understory. Planting will take place on both private and public land, and include engaging a local Working on Country Yued planting team.

Outcomes include :

- 27,000 trees (plants above 2 metres when mature) and 9,000 understorey plants (species below 2 metres when mature) across various sites spanning 36 hectares within the Moore River Catchment to increase and connect breeding and priority forage habitat for Carnaby's Black Cockatoo;
- Engagement of Moora Yued community to provide Working on Country opportunity.



Year old plantation east of Moora



The Crombies, north of Watheroo, are pleased with their new trees



A year's difference. Riparian site east of Moora is looking good

7.4 NLP Small Grants Round 1 – 0647: “Moore Knowledge and Opportunities: Review and Share Learnings from Ten Years of Sustainable Agriculture Projects”

Project duration: April 2016 to 31st December 2017

Budget: \$49,695.45

Project objectives – This project will review sustainable agriculture projects managed by Moore Catchment Council on farms over the past decade, and assess the achievements and key learning from these projects.

Outcomes include :

- Review 123 projects sites on 80 farms and survey farmers to gauge successes/learnings;
- Video interviews with 20 farmers on their experience of sustainable agricultural projects;
- Field event showcasing various projects reviewed.

Article: [Moore Review Project – Sustainable Agriculture in the Spotlight](#)

Over the past ten years the Moore Catchment Council has been busy working with farmers to keep their land sustainable and productive for future use implementing projects to address issues including water erosion, wind erosion, salinity and water logging. These projects were designed to create greater productivity off the land and to encourage the diversity in markets within the wheatbelt. The projects under the microscope include Oil Mallee plantations, perennial pastures, saltbush, brushwood and strategic revegetation. Over the past six weeks I (Emma Pearse) have been driving across the Moore Catchment area and beyond (stretching into the Yarra Yarra Catchment Management area) to have a look at a selection of the projects and get feed-back from the farmers involved. Most feedback so far has been positive with some projects adding huge amounts of productivity to land.

Some of the most successful projects of note so far have been those of saltbush plantings. The saltbush plantings were targeted to be undertaken on marginally salty ground, not only impacted by increasing salinity, but also wind and water erosion and in parts waterlogging. Taking note from farmer's feedback not only has the saltbush created coverage on bare salty ground, it has slowed water flow and hence reduced water erosion in creek lines and has provided wind breaks. Saltbush has proven itself as great fodder shrub for sheep and therefore has boosted the productivity of land that has otherwise been cast aside. Another successful project has been the planting of Perennial pastures, which involved sowing of different seed mixtures including varieties of Panic and Rhodes grasses. The perennial pasture projects were mainly implemented to create year round pasture coverage to increase grazing potential and to address issues of wind and water erosion. These pastures were planted on sandy land at risk of getting blown away. With a varying success rate of plantings, those that did stand the test of time have had fantastic results not only providing year round feed but also stabilising topsoil. Results have also indicated the most palatable grazing option is the Panic grasses, while Rhodes grows quickly after sowing it is likely to be the last of the grasses to be eaten in the paddock by the sheep and cattle.

Projects involving Brushwood, Oil Mallee's and strategic revegetation have all had great positive impacts on the land degradation issues of water logging, salinity and wind and water erosion, however have less of an obvious cash benefit. The take-off of the Brushwood industry has been slow, with some of the greatest issues being the labour intensive method of harvesting and lack of demand within the market. The Oil Mallee projects panned out in a similar way, with the market for harvesting the oil not taking off, and the carbon credits system losing steam. It seems the positives out of these projects have mostly been in increasing the biodiversity of the land, having more aesthetically pleasing outlooks over the country and in the mitigation of land degradation – and for all farmers Fiona falconer and her Grandson Tom with the Brushwood plantation that was planted in 2007.



Fiona falconer and her Grandson Tom with the Brushwood plantation that was planted in 2007.



Saltbush planted in 2011 on salty ground, being grazed by some sheep.

7.5 State NRM Project 14162 – Protecting and enhancing the Moore River biodiversity assets

Project duration: 1st January, 2015 to 30th April 2017

Budget: \$35,000.00

Project objectives — This project will protect, enhance and connect up native vegetation in the upper Moore River catchment located on agricultural land. MCC will hold educational events to ensure landholders and community are better informed of the importance of native vegetation on the farm for both biodiversity and productivity.

Outcomes include :

- Revegetating 7ha cleared land with native species by two landholders;
- 4.85km of fencing to protect and connect up native remnant vegetation on two properties;
- Fungi and bugs information day 30.08.16 and ;
- Land clearing event organised in conjunction with MMPIG and Environmental Defender Office 06.04.17;
- Production of short film to showcase landholders protecting and enhancing their native vegetation. View here: <https://youtu.be/WDxQbsWyl9A>

Article: **Workshop highlights concerns over native clearing**

Driving through avenues of towering Salmon Gum and Wandoo is a well-loved sight of the Wheatbelt – but for how much longer? Questions and comments about roadside clearing were high on the list of concerns asked by the audience at the Native Vegetation Clearing Laws workshop held 6th April in Moora and organised by the Moore Catchment Council. Rachel Walmsley MCC's Community Landcare Coordinator said "From listening to the participants at this workshop, there is definite concern about the clearing of native vegetation around the region and also the laws in place to protect our remnant plants."

The first speaker from the Environmental Defenders Office, Declan Doherty, talked through the State and Commonwealth Laws concerning native vegetation clearing and the processes that applications for clearing have to go through. Rachel said "there were lots of questions for Declan which shows how unclear and complicated the clearing laws are." Eddy Wajon spoke next about the importance of conserving roadside vegetation. He shared practical ideas which can keep trees but ensure road safety including barriers and reflective strips. Rachel said "Eddy has been publically vocal about disappearing roadside native vegetation recently. He has been working alongside Main roads and Shires to plan road upgrades whilst retaining the vegetation especially old trees which deserve to be conserved." Adam Peck from Birdlife gave the group an update about the Carnaby's Black Cockatoo numbers in the region and the declining state wide population status. Carnaby's are a protected species under State and Commonwealth laws and conserving their natural habitat is important for their survival. The final speaker, Fiona Falconer, is a local farmer and environmental enthusiast. Fiona talked about their landcare journey and the importance of finding a balance between clearing and a healthy landscape.



Presenters of the clearing workshop

Rachel said "Thanks to all the speakers for contributing their time and to all the participants who came along and contributed with questions and comments. Thanks to the State Natural Resource Management Programme for funding this day."



Farmers Kristin Lefroy, Andrew Nixon and Ross Adams with their Moore assets projects

7.6 State NRM Project A15053 – Planting food for endangered Carnaby's Black-Cockatoo in the Gillingarra IBA

Project duration: 30th June 2016 to 31st December 2017

Budget: \$52,000.00

Project objectives This project will help conserve and enhance the endangered Carnaby's Black Cockatoo population by increasing the amount of native forage and breeding habitat in the Gillingarra Important Bird Area and in New Norcia.

Outcomes include:

- Revegetating 12ha of land within the target area with 12,000 feed species plants (Hakeas, Grevilleas, Banksias, Wandoo & Marri);
- Fence and protect the revegetated areas with 1 km of fencing;
- Engaging local Yued group work crew to carry out 2ha revegetation at New Norcia site;
- Running a community planting day in Gillingarra to plant 1,000 seedlings around the community hall;
- Providing land managers with guidance on how and where to plant them on their property;
- Holding an information event in Gillingarra to raise awareness of the plight of Carnaby's Black-Cockatoo and show residents how to identify feed species, unveil new Gillingarra Carnaby's signage;
- Encouraging participation in the Carnaby's Black-Cockatoo counts coordinated by Birdlife Australia in Gillingarra and New Norcia;
- Designing 4 signs raising awareness of Carnaby's and local ecology conservation for Gillingarra and New Norcia.

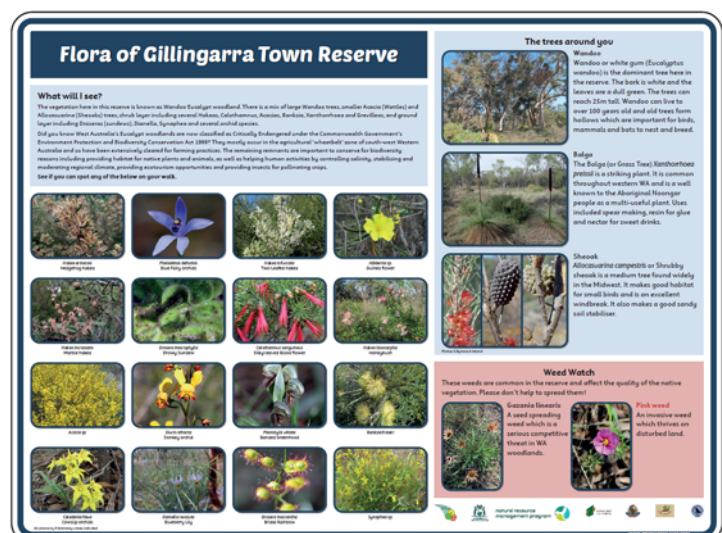


New Carnaby guide for the Victoria Plains Shire

View here: <http://www.moorecatchment.org.au/projects/Carnabys%20Victoria%20Plains%20info%20flyer.pdf>



Revegetation in Gillingarra



One of the new signs for Gillingarra

7.7 State NRM Project A15006 – “Enhancing Mogumber Town Reserve as a local natural asset”

Project duration: 30th June 2016 to 31st December 2017

Budget: \$34,815.00

Project objectives:

This project will conserve and promote the Mogumber Town Reserve as a natural asset in the Victoria Plains Shire. New walk trails will be created, and interpretative signage will inform locals and visitors of the local ecology, history and Yued heritage.

Outcomes include:

- Creating walk trails around the reserve. A 2km circular trail using existing tracks and a 600m return track to the Moore River and historic wooden bridge;
- Designing and erecting 13 interpretive signs showing walk trails and detailing the reserve's ecology, Yued heritage, history and Carnaby's Black cockatoo importance;
- Building and erecting 5 new Carnaby's nesting logs in the reserve;
- Revegetating degraded tracks with 1,000 seedlings during a community planting day
- Hosting a reserve celebration day to highlight project, reserve's natural assets and Yued heritage.



Walk trail draft map



Unfortunately a power pole fire in the reserve during January 2017 has caused damage to some of the reserve. Firebreak tracks has left extensive degradation and open access. MCC contracted a local Yued works crew to plant and guard 500 native understory seedlings to help control erosion and further degradation



Left: Carnaby's pair nesting in a natural stump hollow in the reserve.



7.8 State NRM Project A15066 – “Conserving and enhancing the Moore's natural biodiversity assets”

Project duration: 30th June 2016 to 31st December 2017

Budget: \$34,500.00

Project objective: This project will protect, enhance and connect up native vegetation in the upper Moore River catchment located on agricultural land, and also engage the Yued community to fence and protect the Dalaroo nature reserve north of Moora. The wider community will be engaged through videos of project and interpretive signage.

Outcomes include:

- Re-vegetating 8ha cleared land with native species;
- 1.55km of fencing to protect and connect up native remnant vegetation;
- Production of a short film to showcase landholders protecting and enhancing their native vegetation;
- Engagement of Yued community works crew to protect and enhance Dalaroo Reserve through fencing, rubbish collection and interpretative signage, and opening event.



David Glasfurd is really pleased with his transformed site

7.9 State NRM Project A16055 – “Conserving and enhancing the Moore's natural biodiversity assets Stage 2”

Project duration: 1st April 2017 to 31st December 2018

Budget: \$55,000.00

Project objective: This project will revegetate two sections of Moore River tributaries, and protect and connect up remnant native vegetation, including an endangered tree species, on two farms. It will provide an opportunity for the local Yued community to Work on Country and learn new skills with seed collection/sorting/planting.

Outcomes include:

- Re-vegetating 12ha degraded Moore River tributaries and land with local native species;
- Re-establish 5ha *Eucalyptus recta* — Mt Yule Silver Mallet ecological community;
- Community engagement through an Explore Moore biodiversity event featuring Malcom French, Sarah Mason, Fred Mogridge and Ian Pulbrook;
- 3 x Explore Moore films capturing the Moore's biodiversity and interviews with Moore landcare champions for YouTube;
- Engagement of Aboriginal Yued community works crew (up to 10 people) to Work on Country and learn new skills through seed collection, sorting and seed/seedling planting.



Mt Yule Silver Mallet (Eucalyptus recta) is an Threatened species and listed as Endangered by the Commonwealth EPBC Act



Revegetation site at Mt Yule which has been planted to local species including the Mt Yule Gum



Riparian revegetation at Mt Yule farm



Riparian revegetation at Mallory farm

7.10 State NRM Project A16130 – “Conservation of Carnaby's Black Cock- atoo in Moora and Boonanarring”

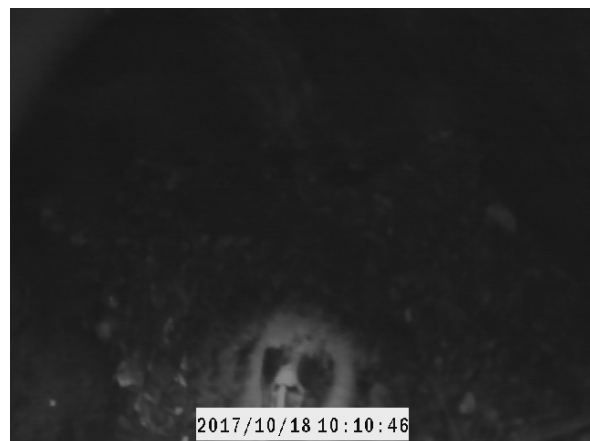
Project duration: 1st April 2017 to 31st December 2018

Budget: \$55,000.00

Project objective: This project aims to increase Carnaby's Black Cockatoo numbers through increasing and connecting breeding and priority forage habitat using mixed native trees and understory. Planting will take place on both private and public land, and include engaging a local Working on Country Aboriginal Yued planting team.

Outcomes include:

- Installing 5 new artificial Carnaby nesting logs at Dalaroo and Koojan reserves;
- Monitoring of new and existing nests with new monitoring camera to gauge breeding success;
- Community participating in the Birdlife Great Carnaby Counts and creating Carnabys habitat;
- Conserving and enhancing the Salmon Gum/Wandoo Koojan reserve remnant with bollard fencing, weed control & revegetation;
- Engaging a local Yued works crew to carry out the works on country in Koojan reserve;
- Creating and protecting 5ha of Carnaby forage habitat on two farms at Boonanarring;
- Community engagement through a Carnaby's artificial log masterclass workshop and accompanying film for release online



New cocky camera shows breeding activity in Moora



*Carnaby plantings at Red Gully Farm with owner Tony
Ruse (right) and manager Ken*



Helping Birdlife volunteers monitor nests around Moora

7.11 State NRM Project CCGL15456 – “Improving natural resource management capability in the Moore River Catchment”

Project duration: 1st Sept 2016 to 31st December 2018

Budget: \$210,000.00

Project objective: This project aims to increase Carnaby's Black Cockatoo numbers through increasing and connecting breeding and priority forage habitat using mixed native trees and understory. Planting will take place on both private and public land, and include engaging a local Working on Country Aboriginal Yued planting team.

This project will:

- Improve NRM decision making by creating new information resources including an easy-to-use native revegetation guide aimed at Moore landholders, and a NRM advice pack for Shires to highlight important ecological information and help with decision making for future progress.
- Promote better engagement in NRM in the Moore catchment by employing 1.1fteq NRM Officers to coordinate project activities, and encourage community involvement through widespread promotion and also attendance of community NRM groups meetings in the Moore region.
- Improve MCC's governance and management through having a Moora office, employing an EO, and organising governance training, seeking funding/sponsorship training for a more sustainable funding future, and media marketing for increased reach within the community workshop for the MCC committee/staff and other local non-profit groups.
- Increase sharing of information by creating a new MCC website with easy-to-access information, collate/e-send/print a quarterly newsletter to members and community networks.
- Encourage a long term partnership with the local Yued Aboriginal community through formulating a Yued NRM Advisory group to meet at regular intervals. This group can plan the activities in this project and also document/plan other projects that interest the group. MCC will work with Yued group and Central Midlands Senior High School (CMSHS) to engage Yued youth through the construction of an Aboriginal wetland garden. MCC will also share Yued knowledge through bush food/medicine workshops, and bus trips to Yued ecological sites (Mogumber).
- Inspire and improve engagement with the wider community by running bus tours/training events to previous project sites.

Article: **Workshop helps to make sense of social media**

Social Media is everywhere and knowing how to use it successfully will help community groups keep in with the high flyers and promote their good work. 16 people attended a MCC organised beginners workshop at the Gingin Community Resource centre on Feb 28th to learn about the different types of social media and what each social media type is used mainly for well presented by Peta Thorniley

Introducing Facebook, Twitter, Snapchat, Linked In, Pinterest & Instagram during the workshop in an interactive manner was enjoyed by all. Advertising on Social Media is now becoming a great way to advertise community groups and your up-coming

events, this will reach a targeted audience and cost very little. Example of how the Shire of Moora's video how a road is bituminised went viral in December 2016 with over 111,000 likes and 340,000 shares in 4 days.



This funding has allowed MCC to employ 2 staff and lease a 4WD ute



Peta Thorniley talks social media



This funding has allowed MCC to develop a new website which will help showcase our work to the world

Article: **Bush medicine workshop causes a stir**

Using WA's wondrous variety of native plants for wellbeing and treating ailments has long been the norm for Aboriginal Noongars. Some of this vast and interesting knowledge was passed on to the community by Viv Hansen who presented to a packed out workshop in Guilderton on Friday 10th March. Viv, a Noongar woman of the Balladong and Wadjuk people has always had an interest in traditional medicinal uses of the bush and recently received a formal qualification in Bush and Western Herbal Medicine in 2008. Rachel Walmsley, Moore Catchment Council's Community Landcare Coordinator who organised the workshop said "The interest in this workshop was overwhelming and I had to turn away at least a dozen people as we just didn't have room. When I phoned Viv to tell her the numbers, she was flabbergasted that there was so much interest. Around 70 people attended ranging from local community to travellers from Perth, various suburbs, Mundaring and even overseas visitors. Amazing turnout !"



Traditional knowledge shared

Viv started the day by running through a few native plants and their uses. Samples from plants such as Oldman Saltbush and Balga (Grass tree) gum were shared around to see, touch and taste. Then the hands-on session started with the furious chopping of Eucalyptus and Melaleuca leaves for the balm which involved boiling up the leaves in olive oil and then adding beeswax and cooling. The balm can be used as a general moisturiser and for tired muscles. Rachel said "Next the group made herbal pot-pourri using various plants which can help respiratory and sleep issues. Viv also enlisted an army of stirrers to make the Eucalyptus and native lemon grass cream which involved plants steeped in water, then combined with wax and glycerine, and stirred furiously until cooled."

The day came to an end and people left armed with a new appreciation of the WA bush and samples of the creations. Rachel said "Many thanks to everyone who came along and gave great feedback, to the Guilderton Country Club for their venue and catering, to Viv and Moort Hansen for their knowledge, and to the State Natural Resource Management Program and Royalities for Regions, and the Northern Agricultural Catchments Council and National Landcare Program for their funding which made this day happen. Apologies to anyone who missed out but we plan to run another one next year. Watch this space !"

Article: **Muchea tour explores plants from pot to paddock**

There was much to admire around Muchea on the recent 'pot to paddock' community trip. A group of landcarers including gardeners and native plant enthusiasts met on Friday 21st April at the Muchea Tree Nursery for an interpretative tour of the inner workings of the nursery. Rachel Walmsley, MCC's CLC said "Natalie Vallance (along with her late husband Steve) has been running the nursery for over 30 years and been passionate about providing local proteaceous species. MCC have been using the nursery for Carnaby's forage habitat species for quite a few years now and Nat has always been so helpful with species advice." The tour group split into two and spent an hour looking around the nursery including the propagating tunnels with misting units and heat mats, the seed raising shed, pot cleaning station and potting shed. Rachel said "Nat explained about the different ways in which plants are grown including from seed, propagated from cuttings and also grafted. There has been a demand for *Corymbia ficifolia* which is a pretty red flowering gum but can have variants. Grafting insures the councils get the colour which they want."

Not all native species you see are propagated successfully. Species including some Hakeas and Grevilleas are difficult or impossible. Rachel said "The nursery has been experimenting with propagation techniques on a number of species including *Verticordia grandis* which is a beautiful long flowering red bush. Nat explained that they had managed to get a few to grow and were now on sale at an unusually elevated price. The level of price normally dictates how difficult the plant was to grow."

The tour concluded at the nursery shop which allowed for the participants to pick up a few native plants. Lunch was hosted by the Chittering Landcare Centre (CLC) north of Muchea. The group put on a fabulous two course lunch and Roseanna Hindmarsh CLC's Executive Officer, gave an informative presentation about the landcare centre's work over the years. Rachel said "The CLC have done so much good landcare work over the years including working with school groups and coordinating large rehabilitation projects. They do such important work."



Nat showing community around her

Afterwards the group visited one of the large rehabilitation sites and marvelled at the changes from a degraded bare site to a woodland paradise full of life. Rachel said "Many thanks to the Muchea Tree Nursery and the Chittering Landcare Centre for such an interesting day, and to the State Natural Resource Management Programme and Royalities for Regions for their funding to run the event."

7.12 Gundawa Regional Conservation Association - Reconnecting landscapes in the wheatbelt through revegetation corridors

Project duration: May 2015 - December 2017

Partnership project between MCC and Yarra Yarra Catchment Management Group with YYCMG as proponent.

Budget: \$29,000

Project objectives Reconnect landscapes in the wheatbelt through revegetation corridors, linking existing remnants, and thereby increasing the resilience of threatened species (e.g. malleefowl, spiny tailed skink), allowing them safe access to increased areas of their native habitat; Engage the wider community in the preservation of our unique biodiversity; Raise awareness of the NCMPG and the important work they do.

Outcomes include:

- Twenty hectares of native habitat to be created in June 2016 on three farms. Sites to be fenced from stock, feral pest baiting to occur at each site; Two malleefowl mounds monitored using remote infrared cameras and information gathered relayed to Malleefowl network and promoted through social media to the wider community;
- Community engagement: One interpretative sign produced for placement at Buntine to raise awareness of our unique biodiversity to locals and visitors to the area; One poster designed for promotional use at State NRM conference in Mandurah Sep 2015; Presentation at Blues for the Bush event Sep 2016; Media articles by both groups.
- Unallocated funds used to organise and run Bioblitz event. A multi regional event between MCC, YYCMG and NACC.



A BioBlitz is a 24-hour event involving rapid collection of data about the biological diversity of a particular site; enabling scientists and other experts to identify as many plant and animal species as can be found in this limited time frame. It doesn't provide a complete inventory of species, but rather a 'snapshot' of the species that occur in the area.

This free event is open to EVERYONE - you don't have to be a native flora and fauna whizz to join in. If you're keen on nature, want to learn about the natural environment around you, meet new friends and don't mind camping then **WE WANT YOU!**

Where is it?

Headquarters and camping is at Latham in the Shire of Perenjori 4hrs NE of Perth, 3hrs SE of Geraldton. Camp at Community Centre



Bunjil Rocks is 10mins N of Latham



Do you feed me? What shall I bring?

Bioblitz team will provide dinner on Saturday evening (hot casserole (meat and veggie options) and apple crumble), Sunday BBQ breakfast and Sunday lunch sandwiches.

Please be self sustaining for all other meals - snacks, morning and afternoon tea, drinks etc

Dress for the bush and friendly mozzies, bring tent/camper, bring warm clothes and bedding - it can get very cold at night!

Who's coming?

Joe Tonga - micro bat and fauna expert.
Running a night stalk

Nic Dunlop - citizen science organiser & all round ecology expert

Faye Arcaro - fungi fanatic and native bee queen. Catch her slideshow

Jenny Borger - Wheatbelt native vegetation ID legend

Phil Lewis - bird crazy and keen photographer. Dawn bird walk leader

Fiona Falconer & Paulina Wittwer - landcare legends and beaut botanists

What time?

Meet and Register in Latham Saturday 23rd September 10:30 - 11:30am

Survey sessions will be Saturday afternoon and Sunday morning

Finish time will be 1:30pm Sunday 24th September

For details and to register visit www.nacc.com.au/project/bioblitz

For more information, please contact the Bioblitz Organising Team:

Jessica Stringemore - jessica.stringemore@nacc.com.au or 9938 0106

Lizzie King - Lizzie.King@nacc.com.au or 0429 374 373

Rachel Walmsley - mcc.nrm@bigpond.com or 0409 296 264

This project is supported by Northern Agricultural Catchments Council, Yarra Yarra Catchment Management Group and Moore Catchment Council, through funding from the Australian Government's National Landcare Programme and Gundawa Regional Conservation Association



7.14 Meat & Livestock Australia Research – L.PDS.1705: “MLA Producer Demonstration Site: Advantages of Pasture Manipulation”

Project duration: 1 April 2017 to 1 April 2020

Budget: \$68,766.00

This project is a Moora Miling Pasture Improvement Group project, Moore Catchment Council is the Sponsor organisation and is charging a fee per annum to administer the project. Ed Riggall has been appointed as Sub Contractor of the project and is responsible for all the reporting , Research etc.

Whole Farm Profit from Grazing Crops

The MMPIG has been successful in securing MLA funding to run a three year project, with demonstration sites between Moora and Miling showing the impact of pasture manipulation for sheep & crop. The sites will show that mid-season manipulation of pasture composition using grass selective herbicides can impact sheep productivity, with increased clover content leading to extended growing seasons, increased ewe & lamb growth rates, increased seed set and decreased weed seed set impact on lambs' eyes and wool VM.

The trial is looking at all impacts of manipulation timing, with a late, early and control plot on each property. Pasture cuts will be taken throughout the season to assess feed on offer, energy, protein and digestibility, as well as species composition. Summer Soil tests will also be taken from each strip to review nutrients and disease risk, while economic analysis will show the impact of pasture quality/quantity on lamb/weaner survival, stock growth rates, stocking rates and supplement feeding requirements.

This was a good year to begin the trial, as one of the great fears with manipulating is removing sheep feed, which was in short supply this year. The challenge is to remove grasses before seed set, without affecting the amount of feed on offer for sheep.

A great result of the trial so far is while improving the overall quality of the pastures with increased clover content, manipulation timing did not significantly impact amount of Feed On Offer (kgDM/ha) during winter or spring. Another significant impact is that manipulation led to an additional 2 weeks of green pasture at the end of spring, with spray topping being delayed as early flowering Barley grass were removed earlier in the season.

This means more feed of a higher quality for sheep resulting in increased weight gains without the risk of grass seeds to lambs' eyes and skin. There will also be a higher clover seed set, leading to better pastures in the future.

Over the next three years, the impacts of manipulation timing will continue to be demonstrated and we encourage everyone to view the sites at the field days next winter and spring. We also look forward to sharing results from the trial as they emerge.



Site 2, Left: unmanipulated strip, right, late manipulated strip.



Site 1. Left, unmanipulated strip, right early manipulated strip

8. Public events and accolades



Rachel shows Deb how tasty saltbush is

Australia Day Awards

MCC nominated the Kerkhof Carnaby Group for the Community Group award in the Shire of Victoria Plains Australia Day Awards and were very pleased they were chosen as winners. The group has worked tirelessly to conserve Carnaby's Black Cockatoo in the Mogumber and Gillingarra areas.



Winners - KCG: Jenny, Ary, Topsy, Rachel (MCC), Wally, Marie and Harry



Regional Leadership NRM Awards

MCC's Community Landcare Coordinator Rachel Walmsley was very honoured to pick up the NRM Coordinator Leadership award in the Regional Leadership NRM awards hosted by Northern Agricultural Catchments Council (NACC) in October 2016

Moora Show 2016

MCC had a display at the Moora show held on 17th September 2016. As with every year, we were inundated with people wanting to grab a free seedling or two to plant for the Carnaby's Black Cockatoo. Around 500 seedlings were available thanks to funding through the State and Australian Carnaby projects which MCC had been running.



MCC office move April 2017

MCC moved their Moora office from Cunninghams on Padbury St to the Department of Primary Industries and Rural Development (Ag dept.) building on Roberts St. This was a strategic move to save money and also build alliances with DPIRD.

Berkshire open day 29th April 2017

MCC had a display at the open day. Visitors were very interested in the wildflower items and cockatoo information



Executive Officer at the National Landcare Conference Melbourne 2016

The National Landcare conference held in Melbourne on 21st to 23rd September was an incredible event with many like-minded people telling their stories that are so similar to our own. Landcare in Australia is a movement and that movement is gaining momentum with many young people now getting out and doing wonderful things in the community.



Key Note speaker Major General the Honourable Michael Jeffries AC, AO (Mil), CVO, MC (Retd) talked about our ability to adapt to Climate change and the fundamentals of a health

9. Moore Catchment Environmental Fund

This year the Moore Catchment Environmental Fund received donations of \$218.00.

In the 2017-2018 financial year Moore Catchment Council planted approx. 67,700 seedlings to increase the forage habitat for the endangered Carnaby's Black Cockatoos, provided 5 nesting boxes for the Carnaby's Black Cockatoos

Fenced 6.5km of remanent vegetation

Been involved in the rehabilitation of the North Guilderton dunes by planting 1,800 seedling with tree Guards for protection on sand blown tracks, held community weeding and rubbish collection days.

Planted 25,000 seedling for revegetation and regeneration of our assets .

Numerous workshops and field days to increase public/community knowledge of endangered species, seed collecting workshops, plant propagation workshops. Indigenous Bush Tucker and Medicine workshop, Social Media workshop

The donated money was used to provide additional support for each of the 14 Environmental projects that MCC undertook over the past 12 months. Moore Catchment Council is a community based Not-For-Profit Organisation taking the lead in attracting on-ground actions to protect and enhance the Moore River Catchment.

10. Supporters of Moore Catchment Council



natural resource
management program



Australian Government

National
Landcare
Programme



Moore Catchment Support cont.

Thank you to all the Members, Supporters, Volunteers and Funding Partners of the Moore Catchment Council without such support the Moore Catchment Council would not exist.

Photos in this publication taken by Rachel Walmsley unless otherwise indicated.

Supporting Partners:

4WD Club of WA

Birdlife Australia

Carrah Wildflower Walks

Chittering Landcare

Cockies for Landcare

Fiona Falconer

Friends of Moore River Estuary

Friends of the Mogumber Reserve

Friends of the Moora Woodland

Greenoil Nursery

Guilderton Community Association

Kerkhof Carnaby's Group

Ledge Point Coastcare

Lower Coastal Group

Lower Moore Working Group

Mogumber Progress Association

Muchea Nursery

North Central Mallee Fowl Preservation Group

West Koojan-Gillingarra LCDC

Yarra Yarra Catchment Management Group

Yued Group

Gunduwa Regional Conservation Association

Department of Biodiversity Conservation and Attractions

