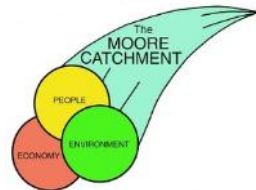


MOORE to the point



Moore Catchment Council
1 Padbury Street,
PO Box 337, Moora WA 6510
Tel: 9653 1355 Fax: 9653 1366
www.moorecatchment.org.au

Issue 25 Summer/Autumn 2012

Welcome to the Moore Catchment Council's (MCC) 25th *Moore to the Point* newsletter. MCC have had a busy summer delivering the NACC NRM programs and also submitting applications to the various Federal grant schemes. Hopefully we'll get lucky and have more to offer you soon. editor *Rachel Walmsley*

Inside this issue:

page

Great Carnaby Count special	2
MCC bird project update	3
NACC incentives - last chance offers !	4
Fab perennial grasses on show	5
Upcoming coastal bird day & bus tour	6 & 7
New IT equip for MCC & new saltbush project	8

Ledge Point Coast cleaned up by volunteers

The Ledge Point Coastcare Group and MCC were very pleased with the enthusiasm of the volunteers at this year's Clean Up Australia Day event in Ledge Point on March 4th. This was Ledge's fifth participation in Clean Up Australia Day and over 25 residents and visitors to Ledge Point supported this Community event which was a great turnout and we would like to thank all of those who donated their time for such a task. The Armadale 4WD club volunteers also cleaned a popular camping and beach fishing site to the south of Ledge Point.

Together the two groups removed over 150Kg of rubbish and marine debris from the coastal strip. "It is a pity that people who go to an area for its peace and natural beauty and bounty do not think to bring their 'empties' back out with them." says Jan Richards Co-ordinator of the LPCG. Two of the bags were selected at random and surveyed to find out what are the most thrown away items – plastic food packaging and fishing



Above: Jan Richards (left) helps a volunteer bring in a load of rubbish

equipment were by far the most discarded items, closely followed by cigarette butts.

"For those unable to attend this year we would like to remind everyone that the **First Sunday in March** is Clean Up Australia at Ledge Point so mark it in your diary now. There are also two additional annual Clean Ups at Ledge Point – during July and October" says Jan. Many thanks to the Naturaliste Marine Discovery Centre - Hillary's Boat harbour, and Keep Australia Beautiful who each gave us assistance and rewards for the volunteers, and the Shire of Gingin who provided skip bins so that bags and resources could be recycled for future events. For further information about Ledge Point Coastcare Group contact Jan Richards on 0409885574 or MCC on 9653 1355, or visit the Facebook page, "Ledge Point Coastcare."



Above: Jan presents Adam Lewis with a Clean Up Australia Day certificate



Above: Rachel (MCC) hands out bags, t-shirts and hats to a family helping to clean up Ledge.



Above: Jan thanks Rohan Swan (Keep Australia Beautiful), and his family and friends for helping to pick up a lot of rubbish.



Counting cockies - how hard can that be?

The Great Cocky Count

The Great Cocky Count took place on the evening of 15 April, at night roosts across the south-west of WA from Geraldton to Esperance. The Great Cocky Count is a simple snapshot survey to provide information to BirdLife Australia, for the conservation of the rare and endangered Carnaby's Black-Cockatoo.

The survey is simple, counting and recording the number of cockatoos flying into their night-time roosting trees at a single location. However, it proved to be a little more difficult than first thought. There are known roosting sites within the Moore River Catchment at Guilderton, Woodridge, Gingin, Regans Ford and Beermullah, and these sites already had volunteers assigned to them. The south of the catchment was covered – what about further north where there is a lack of recorded information? Where are the northern roosting sites at this time of year?



Above: Cocky-counters Wally Kerkoff, Marie Carter, Caitlin, Bella, Rhianna, Nathaniel and Cameron Chapman, and Harry Carter

In the days leading up to the survey, our intrepid cocky-chasers (rather than storm-chasers) Ingrid, Wally Kerkoff, Harry Carter and especially Marie Carter, were busy following up on leads. By the 15th, we thought we had found a roosting site. The cocky-counters, including the Chapman family, turned up at a location about 15 km west of Moora. As the sun disappeared, we were greatly heartened by the sound of cockatoo calls and soon the sky began to fill with their beautiful characteristic flight.

It began with small groups of two or three birds. Wally was pleased to see groups of three because it indicated that these pairs had a successful breeding season in 2011 and were being accompanied by their dependent offspring. Larger groups began to appear, almost 200 birds at a time on one occasion, making counting difficult.

However, the main difficulty was that the groups of birds were circling and coming back around for another flight past us on their way to the roost site. We hadn't been able to locate the actual roosting trees. These were located a short distance to the north-west but were not accessible to us at the time.

We decided the total was **313** birds and it was very pleasing to observe such a large number. Next year we hope to be able to survey at the actual night-time roosting trees.

In the meantime, MCC would like to receive information on the roosting sites throughout the year, so please let us know on 9653 1355 what you have observed.



Above: Over 170 birds in the photo !!

Where do Carnaby's Black-Cockatoos go?

time of year	breeding phase	social organisation	location	type of foraging habitat
January - August	non-breeding	large feeding flocks - mix of males and females, juveniles, adults and post breeding-age birds	closer to the coast	Proteaceous (banksias, dryandras, hakeas, etc.) heath and introduced species such as pines
July – February	nesting season	smaller nesting flocks	dry inland nesting sites	eucalypt woodlands and farmland
July – February	nesting season	some non-breeding birds, either pre- or post-breeding age	closer to the coast	Proteaceous heath and introduced species such as pines

Note: there may be year-round resident populations that remain in the vicinity of their nesting sites and do not migrate towards the coast - this is currently being studied. Information taken from <http://www.birdlife.org.au/projects/carnabys-black-cockatoo-recovery/Ecology-and-Research>

Why worry about Carnaby's Black-Cockatoo numbers?

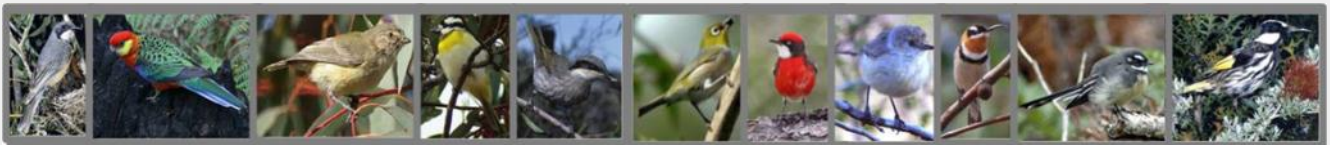
Carnaby's Black-Cockatoos only occur in south-west WA and were once numerous. They are now considered threatened due to their rapid decline in numbers, and their population is most probably ageing. Carnaby's Black-Cockatoos live up to 50 years and raise few chicks to adulthood. They are classified in WA as 'rare or likely to become extinct', and at the Federal level they are listed as 'Endangered'. Over the last 50 years, their numbers have declined by 50% and their range has been reduced by up to one-third.

Their threats include:

- land clearing and loss of feeding, nesting and roosting site; loss of flyways
- fragmentation and loss of connectivity of remnant vegetation
- competition for nesting hollows from Galah, Corella and feral bees
- degradation of remaining nesting trees and lack of new nesting sites
- poaching for illegal sale, and intentional killing
- road strike



Above: Female Carnaby's Black-Cockatoo at a nesting hollow (photo credit: BirdLife Australia)



Improving Habitat and Connectivity in the Farming Landscape for Birds in the Moore River Catchment

Project Update. The project has found some excellent sites for fencing and revegetation to improve connectivity through the landscape. The relatively small amount of strategically-placed fencing and revegetation will provide a large increase in protected vegetation corridors. This will enable birds and other fauna to utilise a much greater area of habitat and a much wider range of resources. In Calingiri, 1.96 km of fencing and 4.27 ha of revegetation will link into previous works in such a way that 130 ha of remnant vegetation and revegetated areas will provide connection from a creek to the Calingiri Rd road corridor vegetation, with the Rica Erickson Nature Reserve directly to the south. Also in Calingiri, fencing 31.5 ha of remnant vegetation along a 1.2 km section of creek will help sustain a vegetation corridor along the 7.4 km of creek-line within the property, linking to more than 19,000 ha of remnant vegetation in the Bindoon Army Camp reserve. The remaining unfenced sections will be fenced through NACC's Saline Lands incentive. In Watheroo, 1.06 km of fencing and 3.48 ha of revegetation will link 103 ha of fully fenced ridgeline remnant vegetation with 53 ha of remnant vegetation to be fenced under the NACC Hidden Treasures program. The latter is directly adjacent to Watheroo National Park, so the fencing and revegetation will provide a vegetation corridor between ridgeline vegetation and the sandplain vegetation of Watheroo National Park.

NACC's CFOC On-ground Incentives - Last Chance !!

The Moore Catchment Council (MCC) have a number of on-ground incentives to offer as part of the Northern Agricultural Catchment's Council (NACC) CFOC wind erosion program.

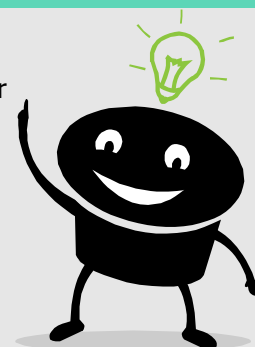
2012 is the final planting season for these incentives on offer as future Federal Government programs **will not offer production based incentives**. So **NOW** is your **LAST CHANCE** to receive some financial help to plant perennials, saltbush, and tree crops. We have limited funding so act now before its all gone !

If you're interested in any of these then give us a call to discuss on **9653 1355**.

	<p>Overview: Incentives available for Sandalwood host species, oil mallees and Brushwood, or come up with your own idea for a tree crop</p> <p>What do I get?</p> <ul style="list-style-type: none"> • Up to \$500/ha for brushwood, \$250/ha for oil mallees, sandalwood • Membership to industry group for one year ie Oil Mallee Association
	<p>Overview: Incentive available for saltbush and rhagodia sp. Also plain and mesh fencing</p> <p>What do I get?</p> <ul style="list-style-type: none"> • Seedling - \$0.20 each • Fencing - \$2,000/km (mesh). \$1,000/km (plain)
	<p>Overview: Incentives available for sub tropical perennial grasses, tagasaste, fencing and watering point</p> <p>What do I get?</p> <ul style="list-style-type: none"> • Pasture - \$85/ha • Fencing - \$1,725/km (mesh), \$1,150/km (plain), \$575/km (electric) • Watering point - \$1,000 each (max 1)
	<p>Overview: Incentives available for fencing, weed and rabbit control, and seedlings</p> <p>What do I get?</p> <ul style="list-style-type: none"> • Fencing - between \$1,150 & \$3,450/km depending on size of area • Re-veg - \$750 - \$1,000/ ha • Weeds - \$30/ha/yr. Rabbits - various rates
	<p>Overview: Incentives for fencing and protecting priority remnant vegetation</p> <p>What do I get?</p> <ul style="list-style-type: none"> • Up to \$4,000/km for fencing • \$1,000/site for covenanting

Ideas on how to use these incentives on offer

- ☺ Fence off a creek line and revegetate with saltbush - great for stock and biodiversity !
- ☺ Plant up paddock boundaries with three lines of trees to provide a wind break, stock shelter and claim carbon credits in the future
- ☺ Fence off and protect a patch of remnant bush from stock
- ☺ Create a feed refuge area with saltbush
- ☺ Plant a buffer area around remnant vegetation using the tree crop incentive
- ☺ Plant sandalwood or brushwood on unproductive land for a future income
- ☺ Fence and reclaim blow outs with native revegetation
- ☺ Plant perennial grasses or tagasaste on unproductive sand to create long term on-farm feed
- ☺ Plant a block of oil mallees or another tree crop and start claiming carbon credits



Participants of the paddock tour held on 27th February were treated to some fabulous displays of perennial grasses between Moora, Watheroo and Dandaragan. The tour organised by the Moore Catchment Council and Agvivo aimed to help excite farmers new to perennials and demonstrate best practice methods to establish them on poor white sand.

The day started at the Badgingarra Research Station with Phil Barrett-Lennard of Agvivo showing the group a multitude of perennial grasses species and companion plants trialled in 2003, and also a paddock demonstrating preferential grazing of Gatton Panic compared to Rhodes Grass. The tour then moved on to Dandaragan to look at Gavin Haywood's perennial grass seeding machine followed by a look at David Cook's magnificent perennial grasses at Noodel. David was on hand to explain his rotational grazing set up with central movable watering points. The group was amazed at the small size of his plastic trough for his thirsty cattle but David assured that the cattle seemed to 'queue up' to use the trough and that his super flow rate was the key.

A quick drive to Chris Vanzetti's to look at a pasture cropping trial then followed before the final tour stop at Brad Tonkin's newly established NACC funded perennial paddock. Brad, who is a perennial veteran, explained his planting method and lessons learned over the years including that you can



Above: Phil points out the tall uneaten Rhodes grass compared to the eaten out Gatton Panic and (below) shows the group different grasses on trial at the Research Station



Above: The group have a look at Gavin Haywood's seeding machine near Dandaragan



do everything right but the weather is the ultimate governing element as demonstrated in 2010. To wind up the tour an impromptu BBQ and drinks (thanks to Andrew Hinton's last

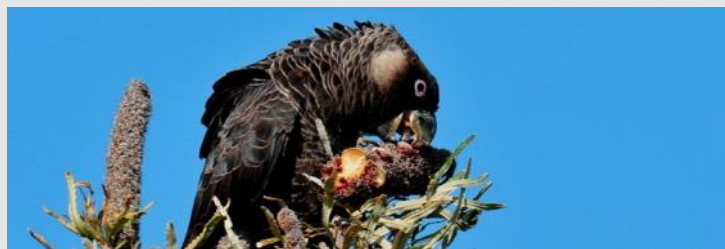
minute dash to Moora) was hosted by Clive and Maureen Tonkin at nearby Westways which proved a great way to end the afternoon tour.

Rachel Walmsley of Moore Catchment Council said 'Many thanks to all the people that came along, to the speakers for showing off their pasture and machinery, to Phil who's perennial knowledge and enthusiasm is boundless, and to the Northern Agricultural Catchment Council and the Moora-Miling Pasture Improvement Group for sponsoring the event.' Rachel continued '*Anyone interested in receiving financial assistance for establishing perennial grasses, please phone myself or Ingrid at the Moore Catchment Council on 9653 1355 and don't forget 2012 is the last year that NACC's Caring For Our Country financial incentive will be available.*'



Above: David Cook's property at Dandaragan is a perennial grass heaven! David showed the group his watering point and demonstrated how quickly the small trough can refill for his herds of cattle.

The Wonderful World of Shorebirds and Carnaby's Black Cockatoo



Join us for a free workshop on shorebird and Carnaby's identification and conservation in Guilderton

Moore Catchment Council, Northern Agricultural Catchments Council, Guilderton Community Association and Birdlife Australia are holding this workshop to celebrate resident and migratory shorebirds, and to raise awareness of Carnaby's Black Cockatoo.

The event is suited to everyone interested in shorebirds and Carnaby's identification, and their conservation.

This FREE workshop includes:

- Presentations by Kim Onton (Regional Coordinator of *Birds Australia's* Shorebirds 2020 program) and Sue Mather (Chair of Birdlife Western Australia)
- A course and quiz to get you started or refreshed on shorebird ID and counting.
- A goodie bag with info on shorebird and Carnaby's conservation, and ID sheets for Australia's shorebirds.

What do you get out of it?

This course is a great opportunity for those new to shorebirds, as well as those more experienced observers, to increase their success in finding, identifying and counting migratory and resident shorebirds. You will also learn about the endangered Carnaby's Black Cockatoo and ways to conserve them from extinction. To top it all off, we will have a look into the daily lives of shorebirds at Guilderton and you can find out how to get involved in shorebird protection.

Please bring

- Binoculars, sturdy footwear, water bottle, sun-smart gear

Program

- 10:00 Registration & morning tea**
10:15 Carnaby's ecology, threats and conservation
11:15 Shorebirds ecology and migration
12:00 Break for lunch
12:45 Shorebird identification (including interactive quiz with prizes !)
2:15 Field activity to local sites to practice ID *including possibility of taking a cruise up the estuary to view the birdlife (subject to availability on the day)*
16:00 Farewell

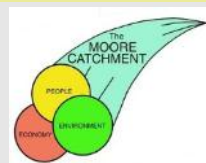
When: Sunday 29th April

Time: 10am - 4pm

Where: Guilderton Community Hall & local coastal sites

FREE for all - with morning tea and lunch provided. We encourage all age ranges to come along to this fun interesting day.

RSVP: Rachel at MCC 9653 1355 by 24th April



Exploring the Turquoise coast

Join us for a **free** bus tour to explore coastal rehabilitation works carried out between Cervantes and Green Head by active community Coastcare Groups.

- Come and listen to coastal and botanical gurus **Dr Kingsley Dixon** (Kings Park) and **Nic Dunlop** (CCWA), and also meet members of the various Coastcare groups of the Turquoise coast and reps from Northern Agricultural Catchment Council, Moore Catchment Council, West Midlands Group, DEC and local Shires
- Share your coastal rehabilitation experiences and enjoy lively discussions on the bus.



**one day bus tour
18th May**

Limited places available - book your seat today ! Aimed at enthusiastic coast conscious community members from Guilderton, Seabird, Ledge, Lancelin, Wedge, Cervantes, Jurien and Green Head

Agenda

9:30am Cervantes - meet at the Catalonia St park. We will hear from Cervantes Coastcare Group, Paul Robb (DEC) and Penny Keenan (West Midlands) on erosion issues and rehabilitation works carried out at Cervantes. Nic Dunlop will talk about Citizen Science projects in the NAR.

Morning tea

11:15am Green Head (Dynamite Bay). Members of the award winning Green Head Coast Care Group will show us around various rehabilitation works and discuss upcoming projects.

Lunch

1:15pm Grigson Lookout Fabulous lookout with Indigenous significance. Kingsley Dixon will discuss coastal ecology and conservation of the coastal flora and fauna.

2:15pm - Arrive back in Cervantes around to pick up cars



Bonus stop for those people who caught the bus from south of Cervantes !! 2:45pm - Wedge Island
We'll have a quick visit to Wedge to discuss issues with beach usage and shacks, and find out about Wedge Indigenous heritage.

When: Friday 18th May

Time: 9:30am - 5pm

Where: meet at Cervantes 9:30am or catch the bus at various pick up points

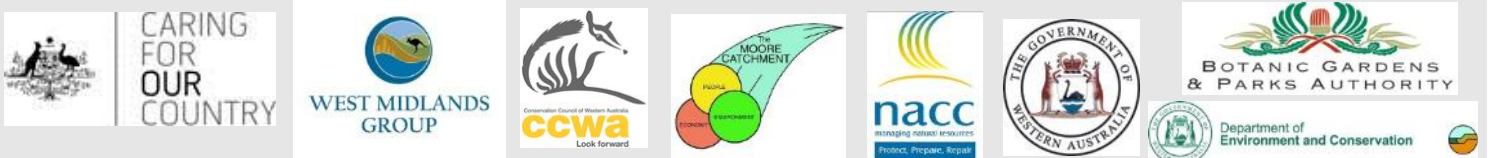
FREE for all - with morning tea, lunch & afternoon tea provided

RSVP: Rachel at MCC 9653 1355. RSVP is essential to reserve your place on the bus.

Meet us at Cervantes for a round trip to Green Head on the bus, or catch the bus from the below towns to save on driving !

	Pick up	Drop off
Guilderton - look out car park	7:45am	4:45pm
Ledge Point - bakery car park	8:15am	4:00pm
Wedge - turn off from Ind Ocean Hwy	9:00am	2:45pm
Jurien - opp. Home hardware	10:50am	1:45pm

Be on time for pick up as bus won't hang around !!!



Lotterywest grant helps upgrade MCC equipment

The Moore Catchment Council wishes to announce that they have been successful in receiving a grant of \$6,358 from Lotterywest for the upgrade of Laptops, Monitors and Software .

The staff & Committee of Moore Catchment Council wish to thank Lotterywest for the grant which gives the staff much greater flexibility to do their jobs.

Computers are essential for communicating environmental information and answering individual requests from the Moore Catchment community. Most of the community use email now so this is the main method of communication and networking used by the MCC.

In having these computers, associated software and monitors MCC staff are able to access and process our GIS programs efficiently, Rachel, Ingrid and Helen can respond more effectively to the requests they receive daily.

The GIS mapping programs requires powerful computers to run correctly. GIS is used extensively to help the MCC to identify threatened species and habitats, aids funding applications for MCC or community groups for on ground action, and provides maps to identify placement for on-ground works such as school revegetation projects, and also conservation of natural heritage areas including indigenous heritage sites.

The MCC are historically known as an organisation where the community can obtain all this environmental information.



Elite Oldman saltbush trials funded by CFOC

Moore Catchment Council in partnership with MMPIG has recently received funding through the NACC Devolved grant scheme and Caring For Our Country Community grants to establish 3 one hectare 'elite' saltbush trial sites in 2012.

This project will partner with CSIRO Livestock Industries to demonstrate new elite strains of Old Man saltbush that have been bred for improved productivity and palatability. Saltbush is an effective fodder shrub and revegetation plant for the thousands of hectares of saline affected unproductive land of the Moore River catchment. It has proven health benefits for stock including Vitamin E and essential minerals, allows deferred grazing from other pasture, and encourages improved hydrological balance and benefits to native biodiversity. These new saltbush will provide MMPIG farmers with an improved grazing tool for future sustainable farming.

CSIRO needs wider field testing and demonstration of the new elite old man saltbush in areas where saltbush is utilised as a fodder shrub to see how well it performs in the local environment both for production and palatability. MMPIG/MCC have planned a number of field days to inform and demonstrate, to first time and experience saltbush growers, the performance of new strains of Oldman saltbush as a fodder shrub and environmental rehabilitation tool. Watch this space for more information !

Upcoming events

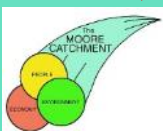
- ★ 27th April - **MCC OGM**, Gillingarra RSVP Helen 9653 1355
- ★ 29th April - **Guilderton Bird workshop** RSVP & more info Rachel 9653 1355
- ★ 13th May - **Ledge Point Native Plant propagation** day RSVP Jan 0409 885 574
- ★ 18th May - **Turquoise Coast bus tour** RSVP & more info Rachel 9653 1355

**Moore
Catchment
Council**



*protecting the natural resources
in the Moore River Catchment*

**NOTE NEW
MOBILE
NUMBERS**



Rachel Walmsley

NRM officer

9653 1355

0409 296 264

mcc.nrm0@bigpond.com



Ingrid Krockenberger

NRM officer

9653 1355

0488 954 664

mcc.nrm01@bigpond.com



Helen Watkins

Executive Officer

9653 1355

0428 514 292

moorecc@bigpond.com

